

## Proposed On-Road Facility Types



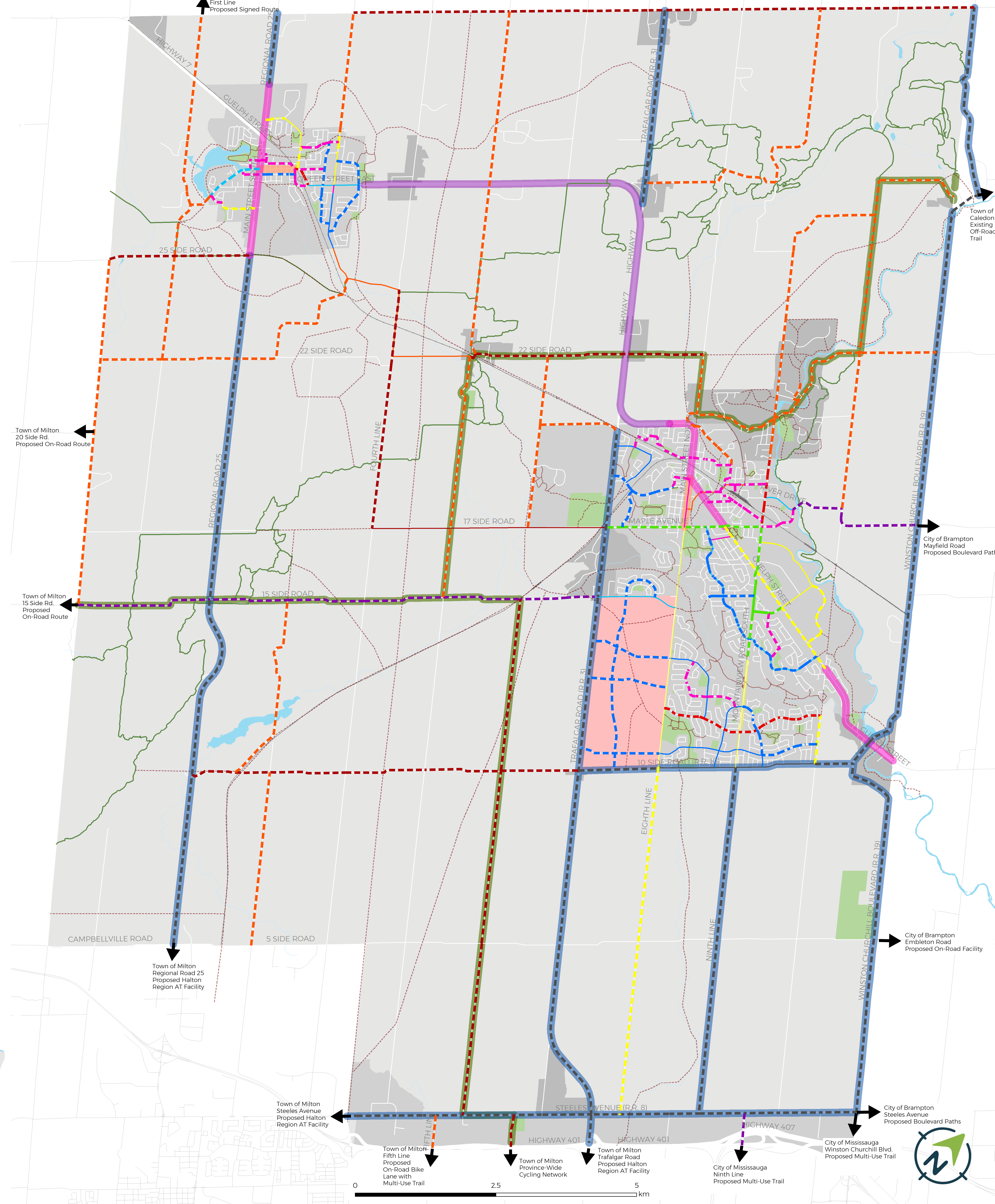
## HALTON HILLS ACTIVE TRANSPORTATION MASTER PLAN

### Legend

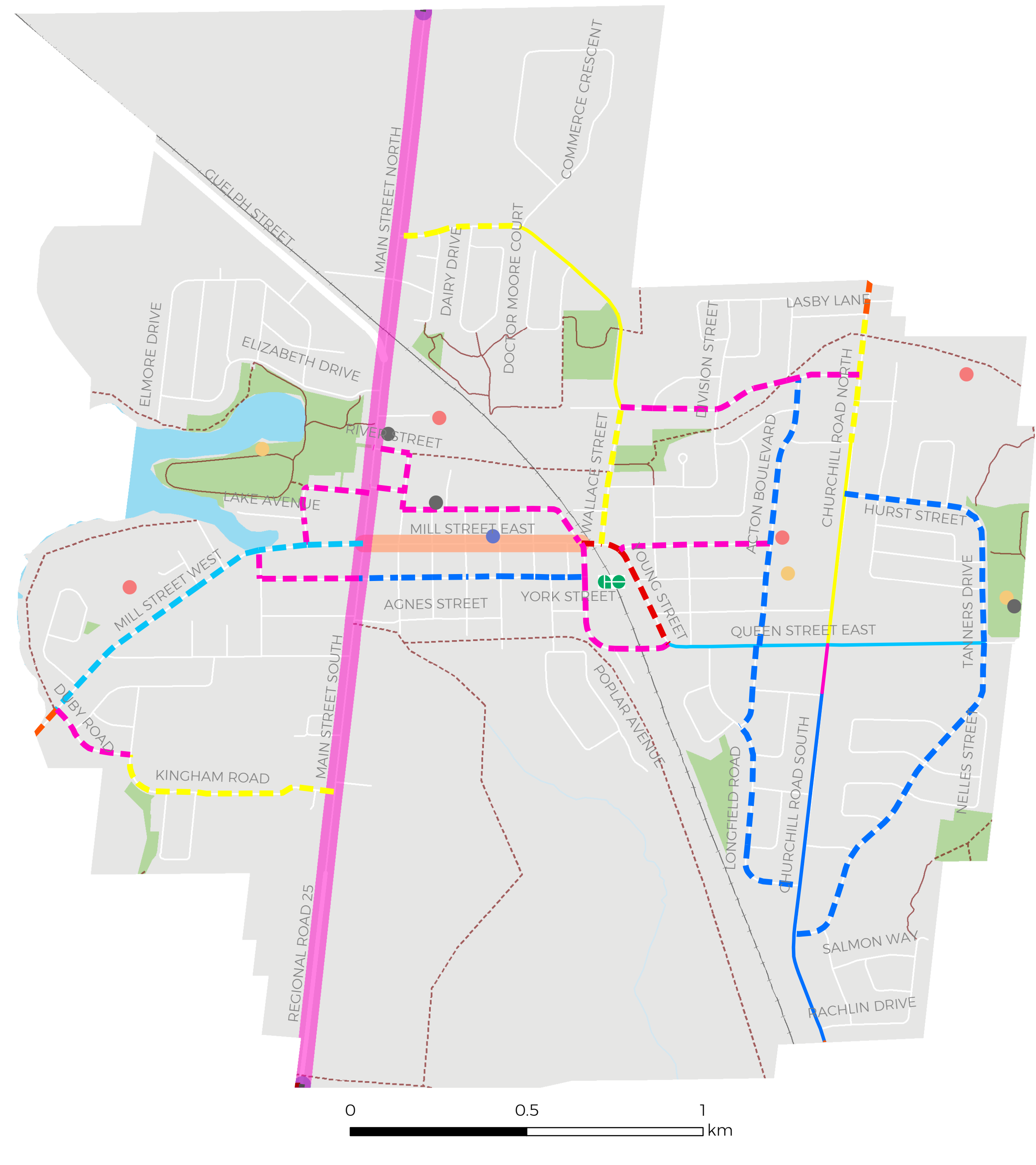
- | Existing | Proposed                               |
|----------|--|
|          | In-Boulevard Multi-Use Path            |
|          | Cycle Track                            |
|          | Buffered Bike Lane                     |
|          | Buffered Paved Shoulder                |
|          | Bike Lane                              |
|          | Paved Shoulder                         |
|          | Signed Bike Route                      |
|          | Signed Bike Route with Sharrows        |
|          | Urban Shoulder                         |
|          | Regional Connection                    |
|          | Off-Road Facility                      |
|          | Corridor needing further study         |
|          | Bicycle-Friendly Corridor              |
|          | Halton Region AT Network <sup>1</sup>  |
|          | Provincial Cycling Routes <sup>2</sup> |
|          | Highway 7 Corridor                     |
|          | Bruce Trail                            |
|          | Community Centre                       |
|          | Hospital                               |
|          | Municipal Building                     |
|          | School                                 |
|          | Park                                   |
|          | Urban Area                             |
|          | Hamlet / Rural Cluster                 |
|          | Vision Georgetown Secondary Plan Area  |
|          | Connection to Surrounding Municipality |

Notes:  
 1. The Halton Region AT Network is based on routes identified in the Region of Halton Active Transportation Master Plan (2015).  
 2. Provincial Cycling Routes refers to the Greenbelt Cycling Route and the Ministry of Transportation (MTO) Province-wide Cycling Route. For additional information on the Greenbelt Cycling Route refer to [www.greenbelt.ca](http://www.greenbelt.ca). For additional information on the MTO Province-wide Cycling Route refer to: [www.mto.gov.on.ca/english/safety/province-wide-cycling-network.shtml](http://www.mto.gov.on.ca/english/safety/province-wide-cycling-network.shtml)

## Town of Halton Hills



## Acton



## Georgetown

