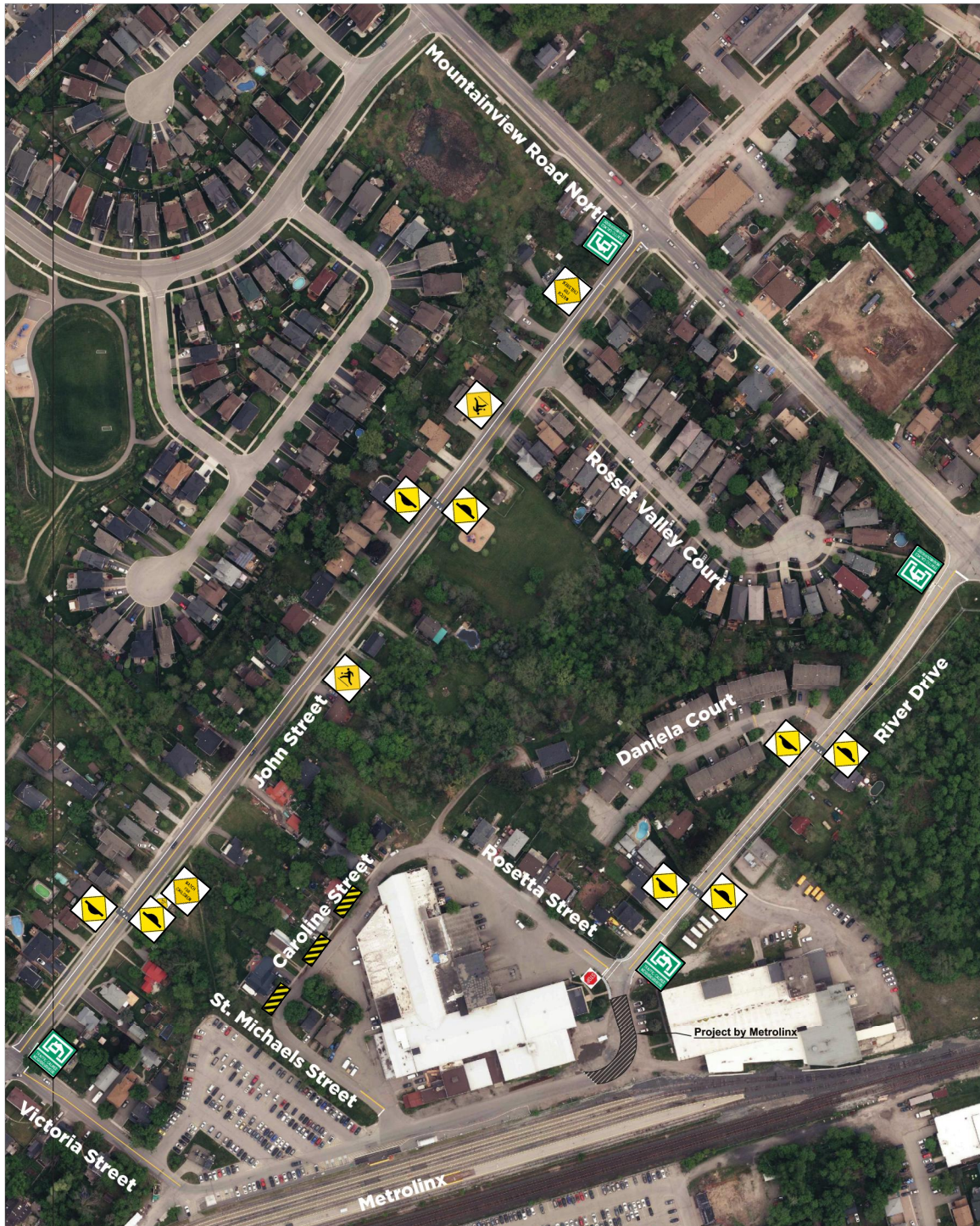






John Street Traffic Calmed Neighbourhood





Proposed traffic calming measures

John Street

- Two speed humps
- Four speed hump signs 
- Two "Traffic Calmed Neighbourhood" signs 
- Two "Watch for Children" signs (EXISTING) 
- Two "Playground" signs (EXISTING) 

River Drive

- Two speed humps
- Four speed hump signs 
- Two "Traffic Calmed Neighbourhood" signs 
- Yellow centre line from Mountainview Road North to Rosetta Street
- White edge line from Mountainview Road North to Rosetta Street

Victoria Street

- Yellow centre line from John Street to Metrolinx parking lot

Rosetta Street at River Drive

- White stop line
- Yellow centre tail

St. Michaels Street

- White stop line
- Yellow centre tail

Caroline Street

- Three "Hazard Marker" Signs 