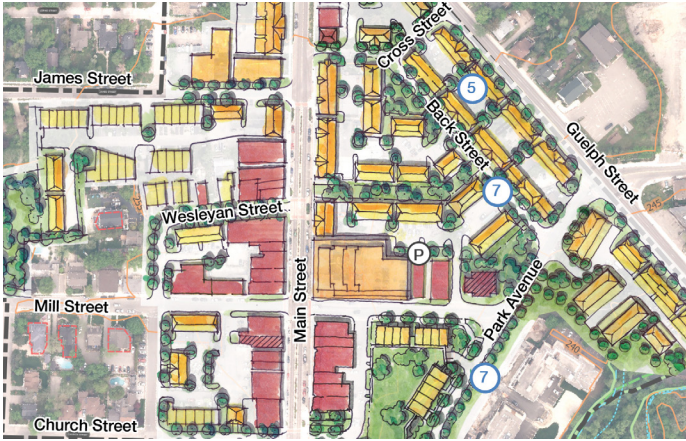


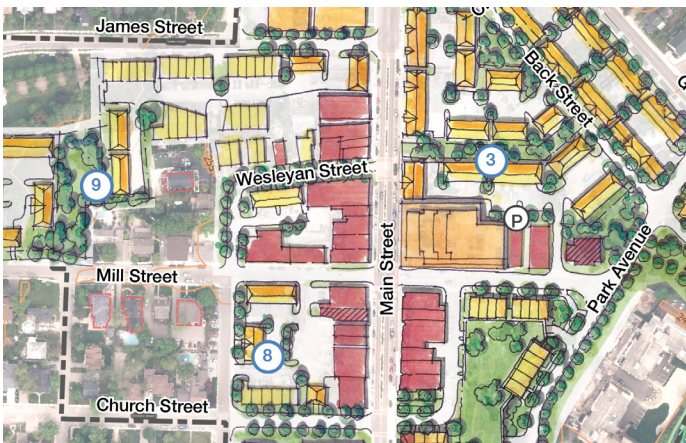
Alternative 1: 'The Mews'



1a: Buildings

Townhouses along Guelph Street and Park Avenue (#5, #7)

53% 47%  



1b: Buildings

Townhouses on existing parking lots; replace parking in new parking structures (#3, #8, #9)

33% 67% 



1c: Buildings

Expand the Downtown Boundary to include properties on Charles Street for townhouses (#11)

55% 45% 

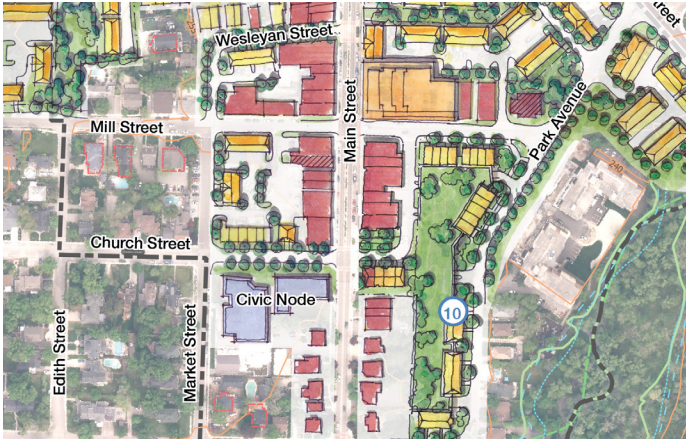


1d: Public Space

Extend Remembrance Park over the roof of a new underground parking structure (#9)

65% 35% 

Alternative 1: 'The Mews'



1e: Public Space

Replace existing small parking lot and redevelop properties with townhouses and parking structure with park on top (#10)

57% 43% 



1f: Public Space

Access at the end of Back Street to the greenlands (#6)

88% 12% 

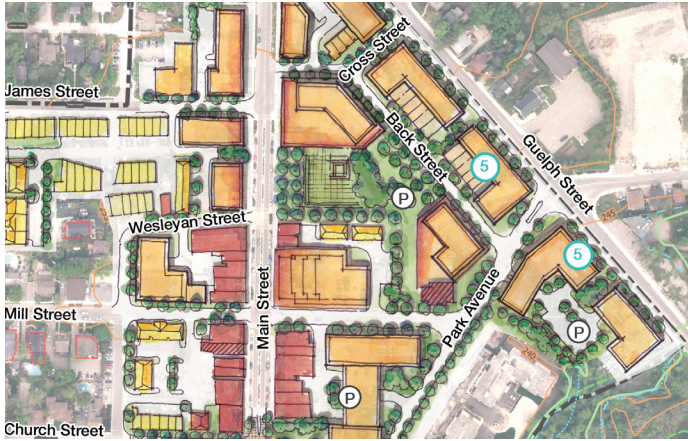


1g: Transportation

Accommodate a bike lane within a lane shared with vehicles on Main Street (#1)

46% 54% 

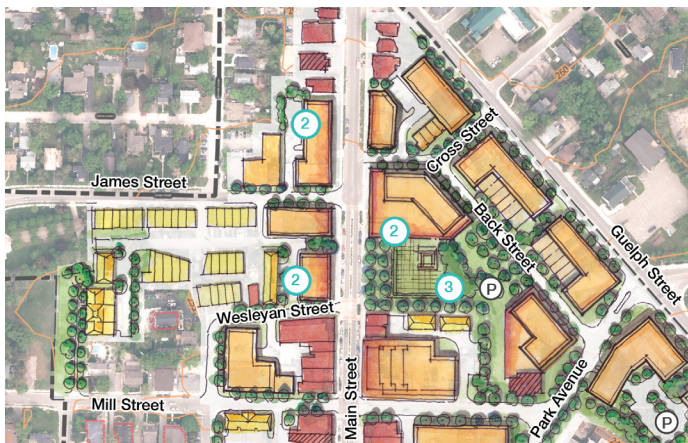
Alternative 2: 'The Town Square'



2a: Buildings

6 storey buildings between Back Street and Guelph Street (#5)

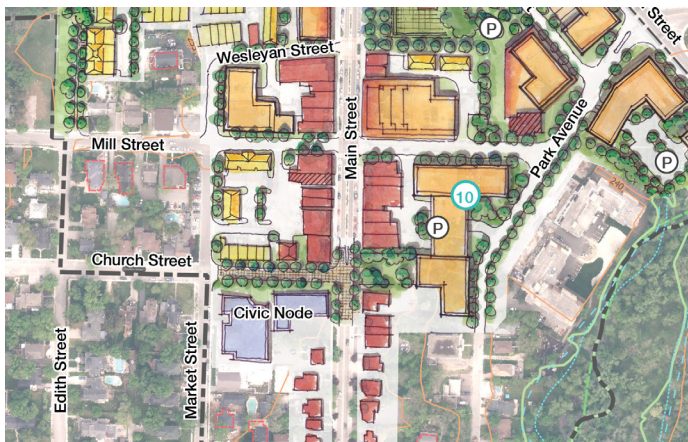
54% 46% 



2b: Buildings

Open a portion of Main Street to create a new urban square (#3) surrounded with new retail space and 3 to 6 storey buildings (#2)

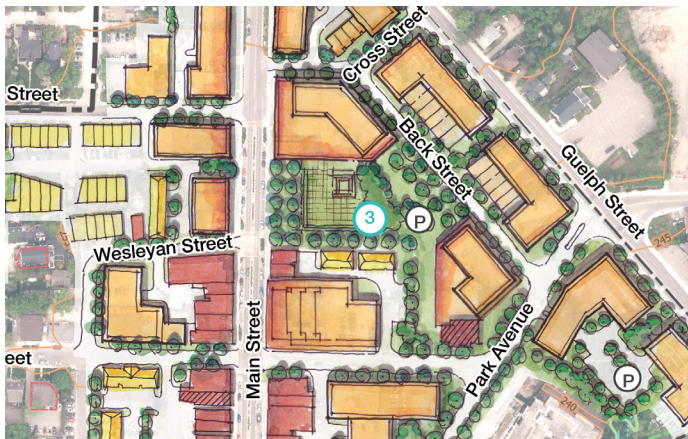
71% 29% 



2c: Building

A 3 to 6 storey building built into the slope behind the existing parking lot to create a landmark to terminate the vista along Church Street (#10)

58% 42% 

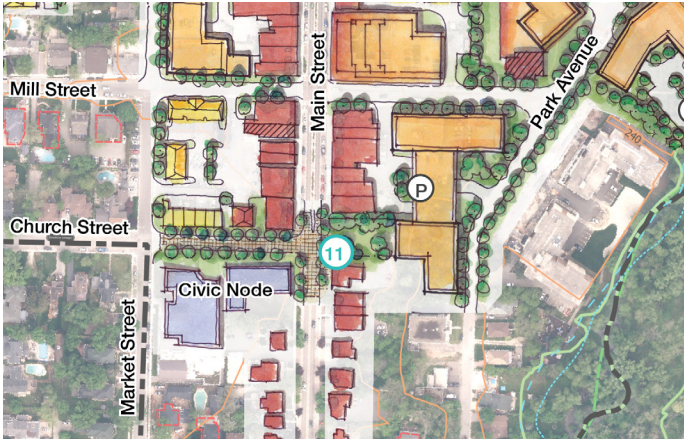


2d: Public Space

Create an urban square fronting onto Main Street between James Street and Wesleyan Street (parking will be underground) (#3)

79% 21% 

Alternative 2: 'The Town Square'



2e: Public Space

Replace parking north of the Cultural Centre and Library with a new public space (#11)

57% 43% 

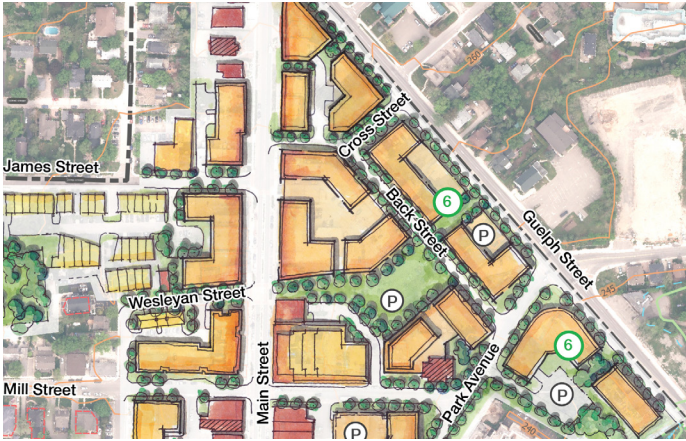


2f: Transportation

Designate bike routes through the Downtown on local roads parallel to Main Street (i.e. Market Street and Park Avenue)

67% 33% 

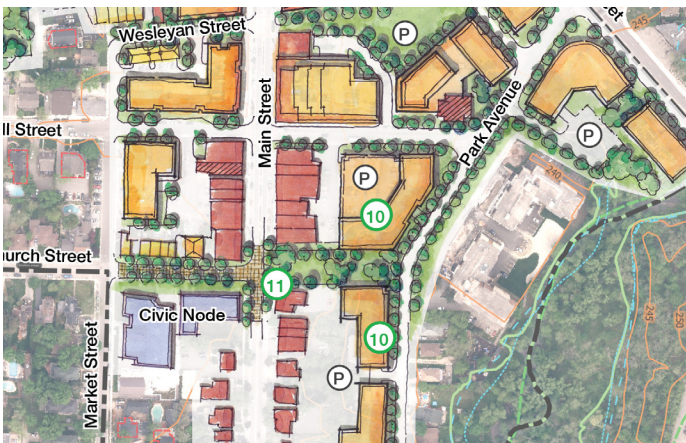
Alternative 3: 'The Village Green'



3a: Buildings

Locate the tallest buildings along Guelph Street (#6)

74% 26% 



3b: Buildings

3 to 6 storey buildings built into the slope behind the existing parking lot (#10); maintain an open view to the greenlands (#11)

74% 26% 



3c: Buildings

Expand the Downtown boundary to redevelop the properties east of Remembrance Park with a 6 storey building to frame the park and townhouses with Mill and Charles Street addresses (#9)

38% 62% 



3d: Open Space

Create a pedestrian walkway and green space between Main Street and Back Street (#4)

82% 18% 

Alternative 3: 'The Village Green'



3e: Open Space

Green space/urban square at foot of Church Street with a pedestrian connection from Main Street down to Park Avenue (#11)

78% 22% 

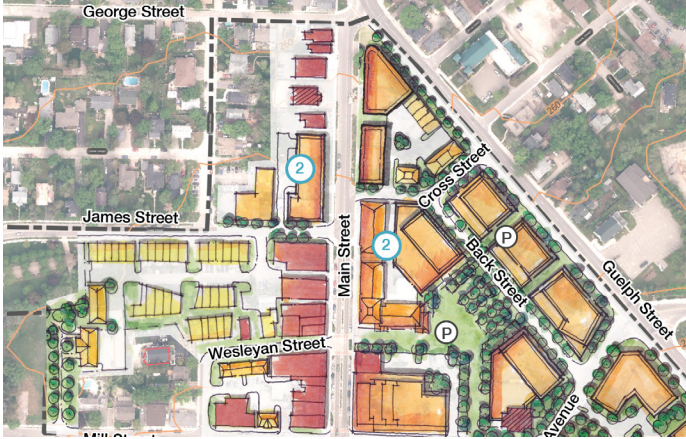


3f: Transportation

Remove the landscaped centre median and the on-street parking on one side of Main Street to create a wider sidewalk and space for outdoor patios

70% 30% 

Alternative 4: 'The Commons'



4a: Buildings

Establish a 3 storey height limit along Main Street, stepping back to 8 storeys (#2)

70% 30% 



4b: Buildings

Line both sides of back Street with townhouses; 10+ storey buildings face Guelph Street (#7)

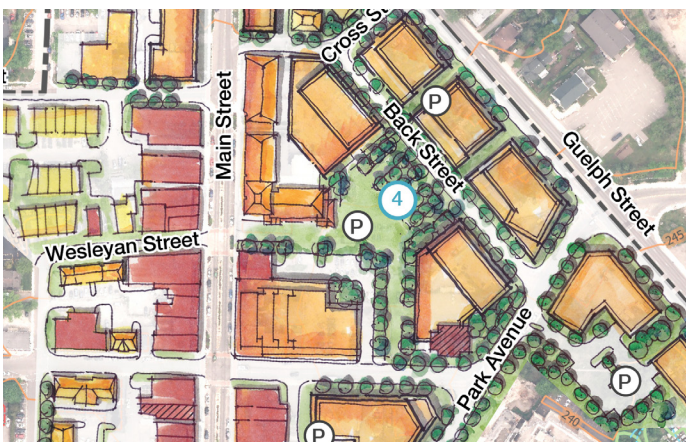
38% 62% 



4c: Buildings

Landmark building at Main Street and Guelph Street (#3)

72% 28% 

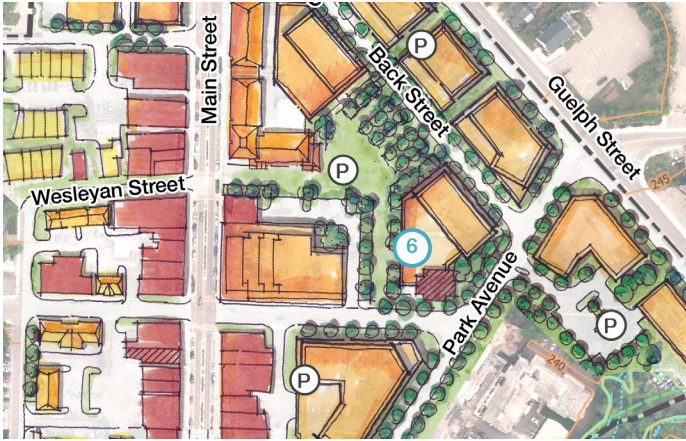


4d: Public Space

Create a park on top of a new underground parking structure lined with retail uses (#4)

83% 17% 

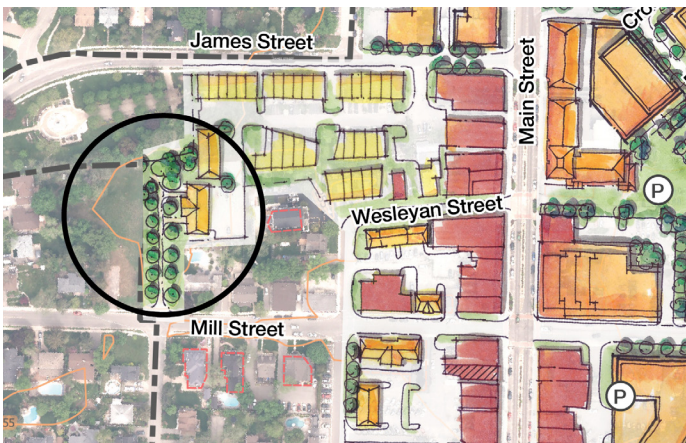
Alternative 4: 'The Commons'



4e: Public Space

Create a small public space in front of the historic post office (#6)

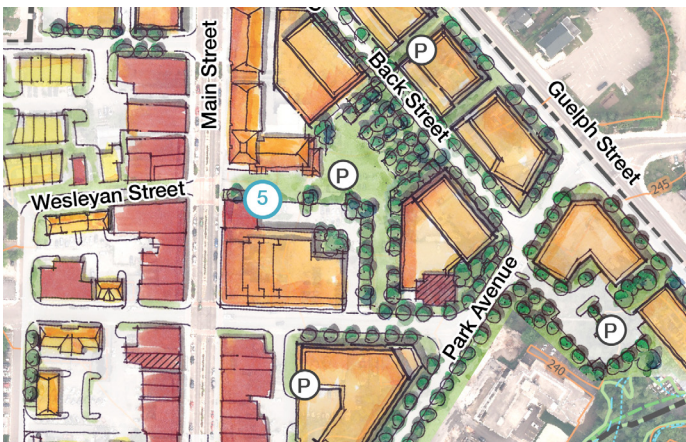
73% 27% 



4f: Transportation

Create a public road along the east side of Remembrance Park

33% 67% 



4g: Transportation

Provide some parking adjacent to the park, on the west side of the McGibbon (#5)

79% 21% 

223

Participants
(May 23, 2018)

Social Media Posts

Town of Halton Hills
17 hrs · 🌐

Take the online survey and share your thoughts on the four draft alternatives for Downtown Georgetown created with the community at the April 4th 2018 Design Summit: <https://destinationdowntown.metroquest.ca/>
#dtowngtown




Like Comment Share

👍 5 Oldest ▾

4 shares

Town of Halton Hills
@HaltonHills

Follow ▾

Take the online survey and share your thoughts on the four draft alternatives for Downtown Georgetown created with the community at the April 4th 2018 Design Summit: destinationdowntown.metroquest.ca
#dtowngtown




3:30 PM - 7 May 2018

1 Retweet TPP

🗨️ 🔄 1 ❤️ 📧

TPP Tweet your reply

Town of Halton Hills
9 May at 14:30 · 🌐

Take 5 minutes to share your thoughts on Downtown Georgetown: <https://destinationdowntown.metroquest.ca/>
So far, the community is saying an urban square fronting onto Main Street would be great downtown
#dtowngtown #downtowngeorgetown



Halton Hills - Destination Downtown
The Town of Halton Hills has launched Destination Downtown, which is a study to develop a vision and new planning framework for Downtown Georgetown. The conclusion of the study will result in a [DESTINATIONDOWNTOWN.METROQUEST.CA](https://destinationdowntown.metroquest.ca/)

Like Comment Share

👍 2 Oldest ▾



Town of Halton Hills
@HaltonHills

Follow ▾

Take 5 minutes to share your thoughts on Downtown Georgetown: destinationdowntown.metroquest.ca
So far, the community is saying an urban square fronting onto Main Street would be great downtown
#dtowngtown #downtowngeorgetown

Town of Halton Hills
11 May at 14:30 · 🌐

Take the online survey and share your thoughts on the four draft alternatives for Downtown Georgetown created with the community at the April 4th 2018 Design Summit: <https://destinationdowntown.metroquest.ca/>
#dtowngtown

Like Comment Share

👍 5

1 share

Town of Halton Hills @HaltonHills · May 11

Take the online survey and share your thoughts on the four draft alternatives for Downtown Georgetown created with the community at the April 4th 2018 Design Summit: destinationdowntown.metroquest.ca
#dtowngtown




🗨️ 🔄 2 ❤️ 3 📧