



Black Creek Subwatershed Action Plan

Project Initiation Presentation to
Town of Halton Hills Council

Melissa Williams, Senior Manager, Strategy and
Stakeholder Engagement, CVC

May 5, 2025

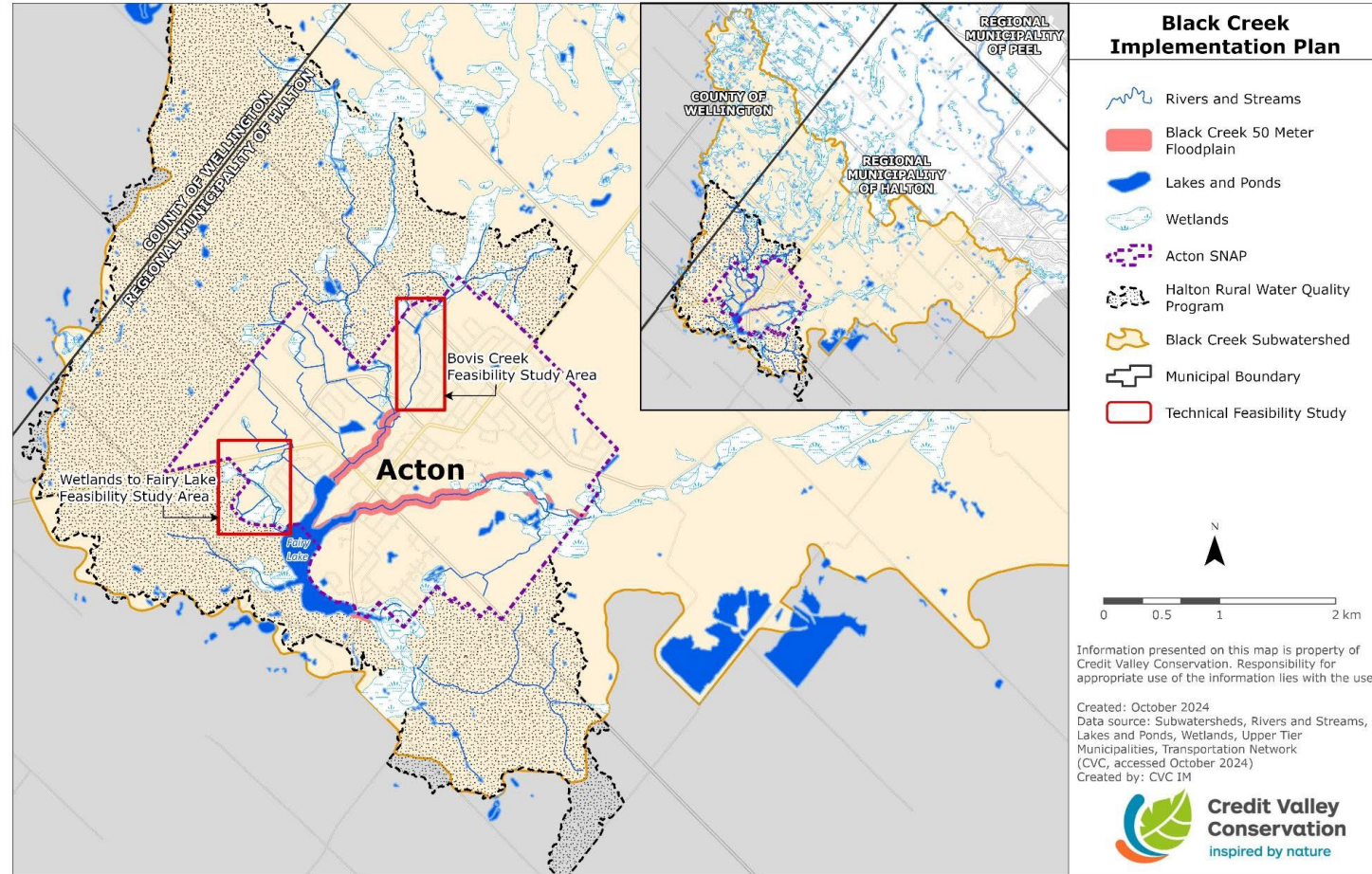


**Credit Valley
Conservation**
inspired by nature

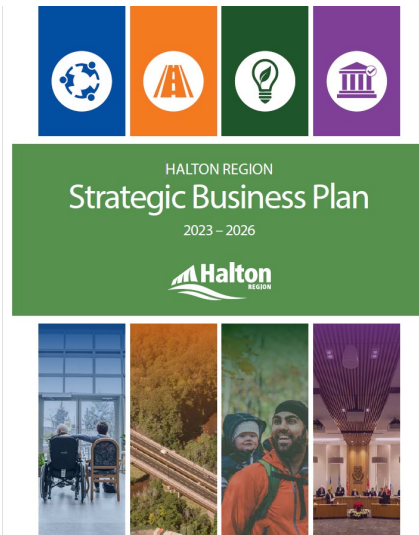
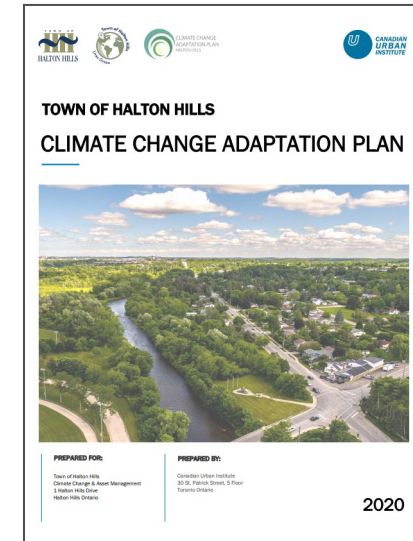
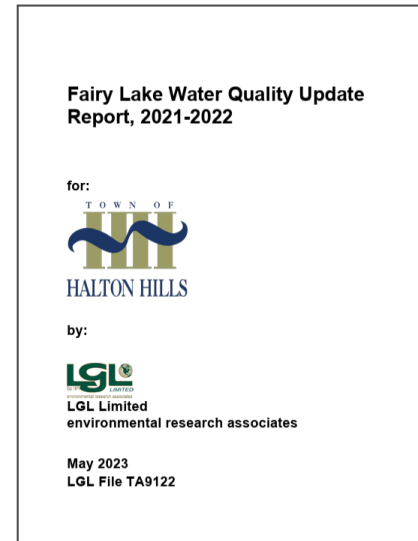
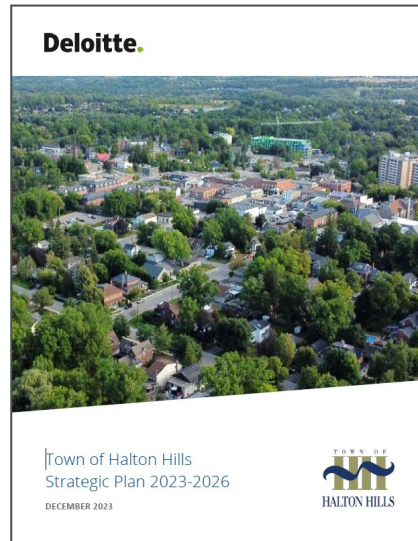
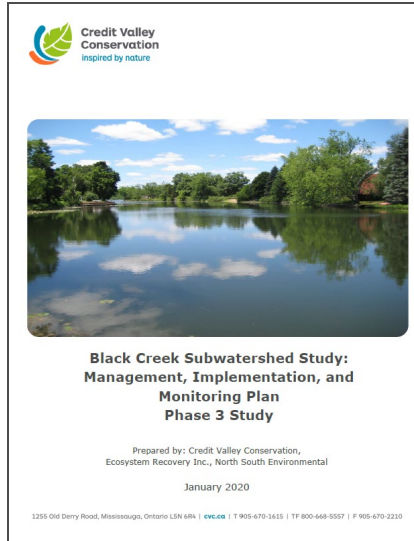


Project Overview

- Sustainable Neighbourhood Action Plan (SNAP)
- Feasibility Studies for Restoration Work in Priority Areas
- Floodplain Mapping and Risk Assessment



Strategic Alignment



Our Future Together

Project Timeline

Project	Q2 2025 – Q1 2026	Q2 2026	2027	2028	2029
Sustainable Neighbourhood Action Plan (SNAP)	Action Plan Development and Early Action Projects	Implementation of Action Plan recommendations			
Restoration of Priority Areas – Feasibility Studies	Feasibility Studies (Background Characterization, Existing Conditions, Alternative Evaluation)	Reporting (Recommendations and Next Steps, preparation of report)			
Floodplain and Flood Risk Mapping	Hydrology and hydraulic modelling	Flood hazard mapping and identification of flood vulnerable structures			

Sustainable Neighbourhood Action Plan (SNAP)



The SNAP Model



Image from:

Potential SNAP Actions



- Community stewardship events
- Invasive species management on municipal lands
- Landowner engagement and stewardship
- Educational programming (community and school-based)
- Implementation of restoration projects



Feasibility Studies

Bovis Creek and Fairy Lake



Bovis Creek Feasibility Study

- Evaluate the feasibility of restoring 1.8km of Bovis Creek upstream of Fairy Lake
- Consider natural channel design and improvements to habitat, water temperature, groundwater connection and sediment transport regime in the proposed solutions
- Identify permit and study requirements



Fairy Lake Feasibility Study

- Consider wetland design alternatives at inlets to Fairy Lake to reduce phosphorus loading and improve water quality
- Progress the selected alternative to the conceptual design level
- Identify permit and study requirements



Floodplain Mapping & Risk Assessment

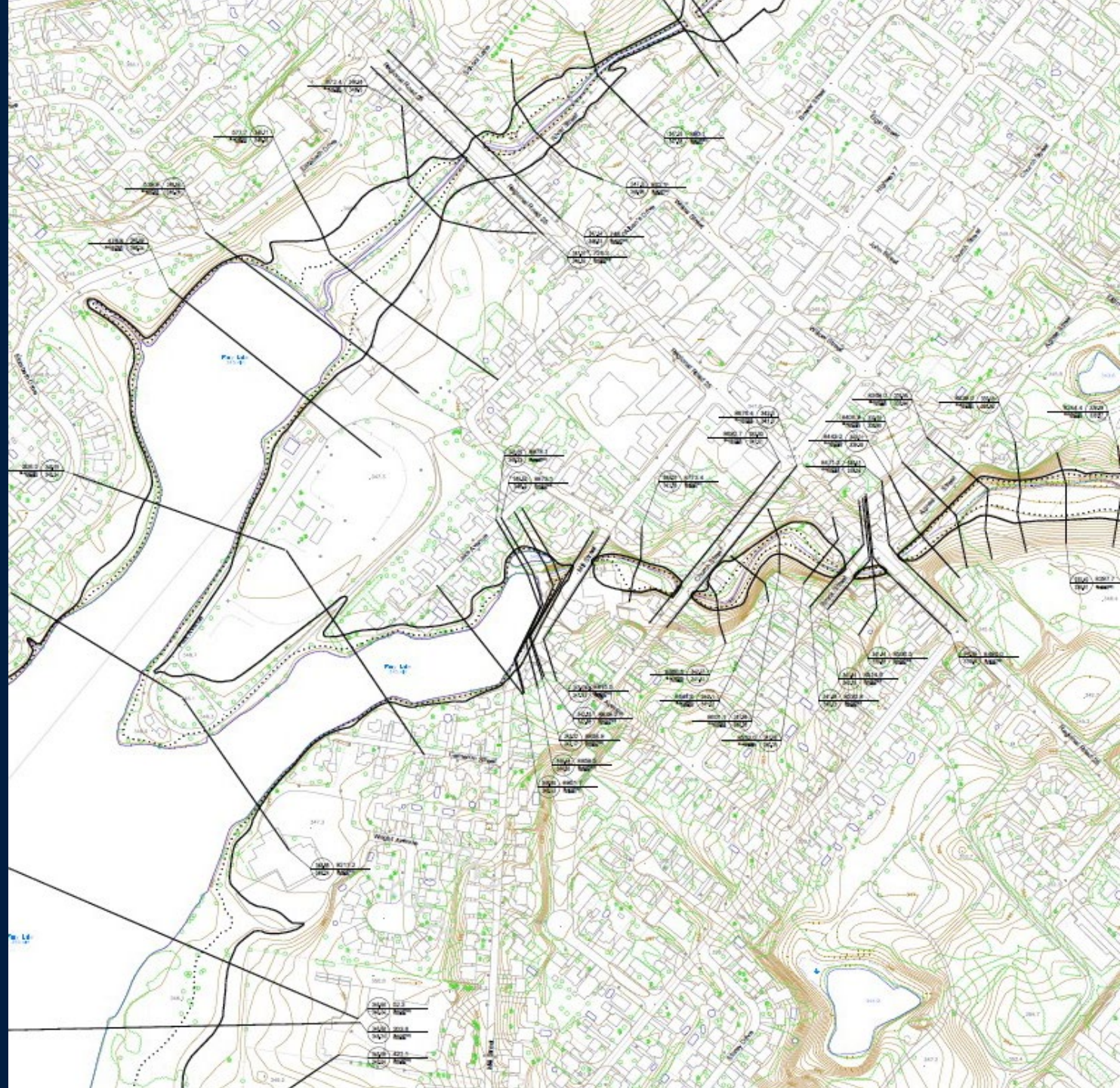
Black Creek in Acton



Regulatory Floodplain Mapping

Maps are based on the simulation of the greater of:

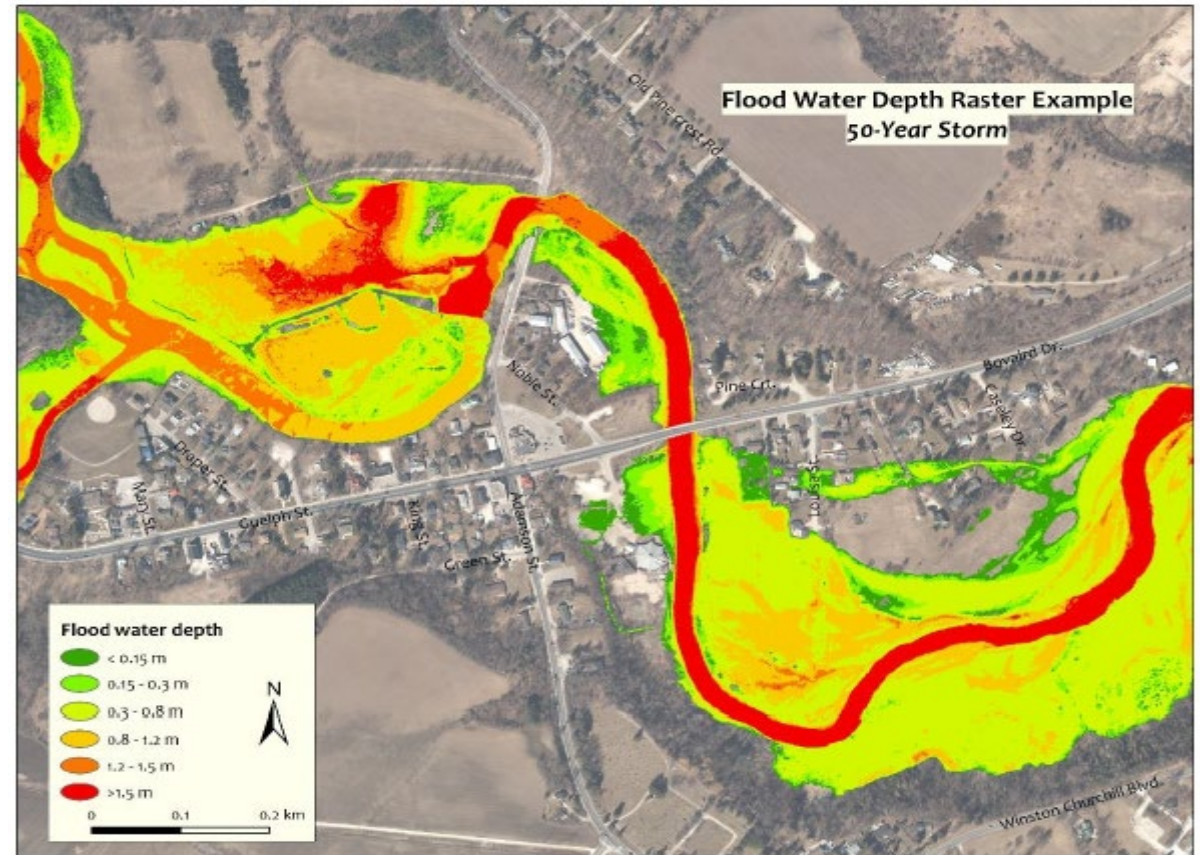
- 100-year storm
- Hurricane Hazel centered on the Watershed



Inundation Maps



Flood Water Depth Maps



Next Steps

Q2 2025

- Project Steering Committee to be established
- Public communications regarding project launch

Q3 – Q4 2025

- Workshops with project partners and community groups
- Public engagement activities including:
 - 'Walk and Talk' event
 - Open house
 - Public survey
- Early implementation events in the Fall:
 - Community Stewardship event
 - Sustainable Home Landscapes workshop/walk

Q1 2026

- Presentation of final SNAP Action Plan to Black Creek Advisory Group and Town Council for approval/endorsement



Questions?
