

**Legend**

	Special Policy Area #1- Stewarttown South Transportation Network		Major Arterial
	Special Policy Area #2- Core		Minor Arterial
	Special Policy Area #3- Expansion Lands		Collector
	Settlement Boundary		Local
	Parcels		CN Railway Line
	Watercourse		

**Active Transportation Network**

	Existing Off-Road Facility
	Proposed Off-Road Facility
	Proposed Cycle Track
	Existing Region AT Network
	Proposed Regional Connection



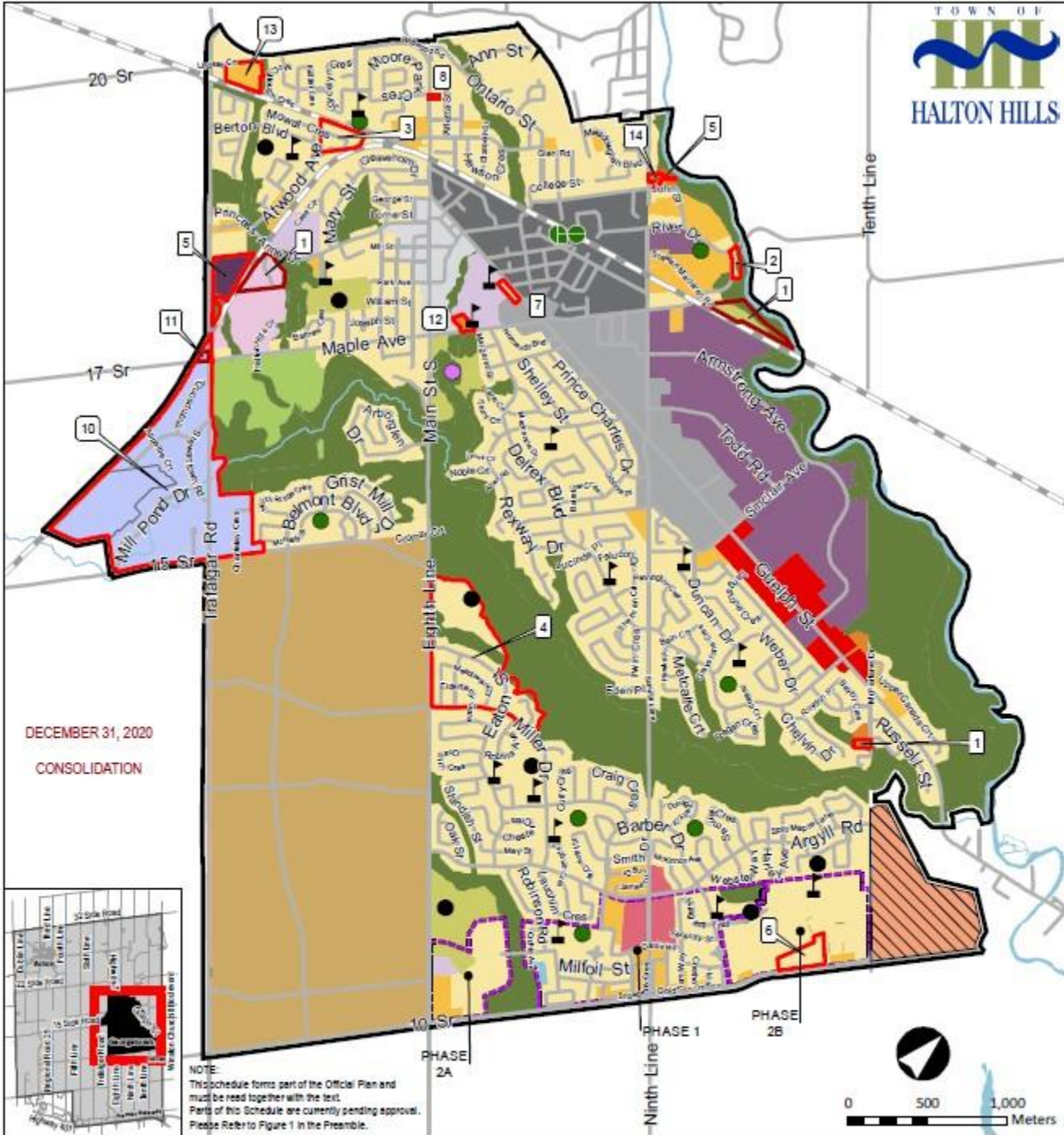
**Schedule 'H9-2'**

Town of Halton Hills Official Plan

**Stewarttown Transportation Plan**

Meters  
1:5,000

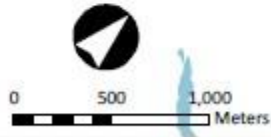




DECEMBER 31, 2020  
 CONSOLIDATION



NOTE:  
 This schedule forms part of the Official Plan and must be read together with the text.  
 Parts of this Schedule are currently pending approval.  
 Please Refer to Figure 1 in the Preamble.



<b>Environmental &amp; Open Space</b>	Secondary Node	Community Node Area (See Schedule A5)	Waterbody
Greenlands	Corridor Commercial	GO Station Area (See Schedule H3-2)	Watercourse
Major Parks and Open Space	Civic Centre	Stewarttown (See Schedule H9-	Railway Line
Private Open Space	Major Institutional	Urban Boundary	Community Park
<b>Urban</b>	General Employment	Residential Special Policy	Neighbourhood Park
Low Density Residential	Trafalgar Road Redevelopment	Special Policy	School
Medium Density Residential	Future Residential/Mixed Use Area	Other Special Policy	Major Transit
High Density Residential	Downtown Area (See Schedule H7-1 Downtown Georgetown Land Use Plan)	HPBATS/GTA West Corridor Protection Area	