

Legend

-  Special Policy Area #1- Stewarttown South
-  Special Policy Area #2- Core
-  Special Policy Area #3- Expansion Lands
-  Settlement Boundary
-  Parcels
-  Roads
-  Watercourse
- Land Use**
-  Stewarttown Residential Area
-  Natural Heritage System

Key Map

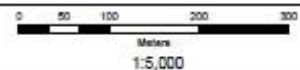


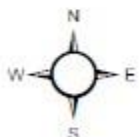
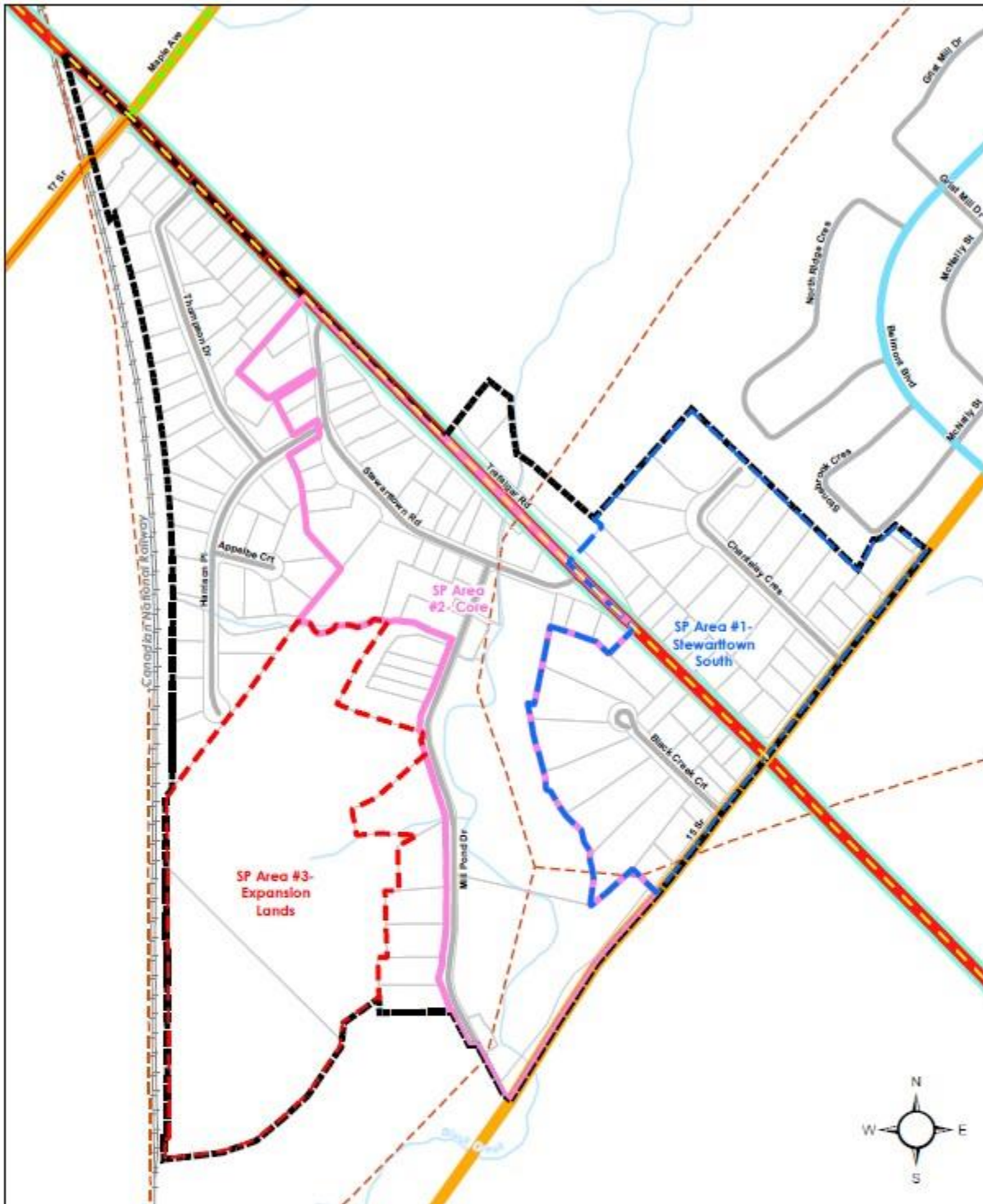
Schedule 'H9-1'



Town of Halton Hills Official Plan

**Stewarttown
Land Use Plan**





Legend

	Special Policy Area #1- Stewartown South		Major Arterial
	Special Policy Area #2- Core		Minor Arterial
	Special Policy Area #3- Expansion Lands		Collector
	Settlement Boundary		Local
	Parcels		CN Railway Line
	Watercourse		

Active Transportation Network

	Existing Off-Road Facility
	Proposed Off-Road Facility
	Proposed Cycle Track
	Existing Region AT Network
	Proposed Regional Connection

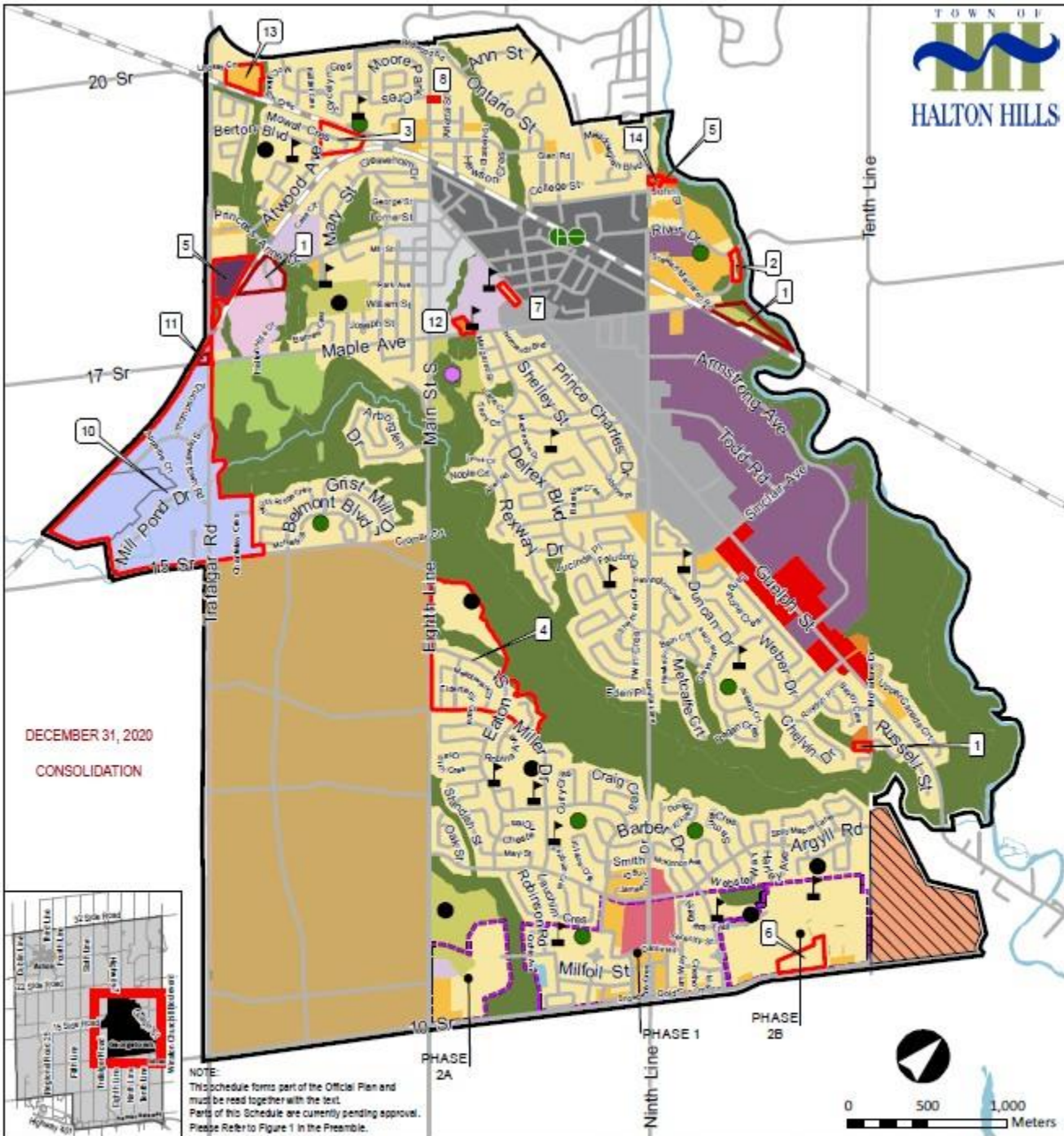


Schedule 'H9-2'

Town of Halton Hills Official Plan

**Stewarttown
Transportation Plan**

1:5,000



DECEMBER 31, 2020
CONSOLIDATION



NOTE:
This schedule forms part of the Official Plan and must be read together with the text. Parts of this Schedule are currently pending approval. Please Refer to Figure 1 in the Preamble.

Environmental & Open Space	Secondary Node	Community Node Area (See Schedule A5)	Waterbody
Greenlands	Corridor Commercial	GO Station Area (See Schedule H3-2)	Watercourse
Major Parks and Open Space	Civic Centre	Stewarttown (See Schedule H9-	Railway Line
Private Open Space	Major Institutional	Urban Boundary	Community Park
Urban	General Employment	Residential Special Policy	Neighbourhood Park
Low Density Residential	Trafalgar Road Redevelopment	Special Policy	School
Medium Density Residential	Future Residential/Mixed Use Area	Other Special Policy	Major Transit
High Density Residential	Downtown Area (See Schedule H7-1 Downtown Georgetown Land Use Plan)	HPBATS/GTA West Corridor Protection Area	