

An aerial photograph of a road intersection, likely at Dayfoot Drive, with a semi-transparent blue rectangular overlay covering the top portion of the image. The road has multiple lanes with white lane markings and arrows. There are trees and some buildings visible in the background.

12, 22, and 24 Dayfoot Drive

**Official Plan Amendment
Zoning By-law Amendment**

**D09OPA21.004
D14ZBA21.018**

March 4, 2024

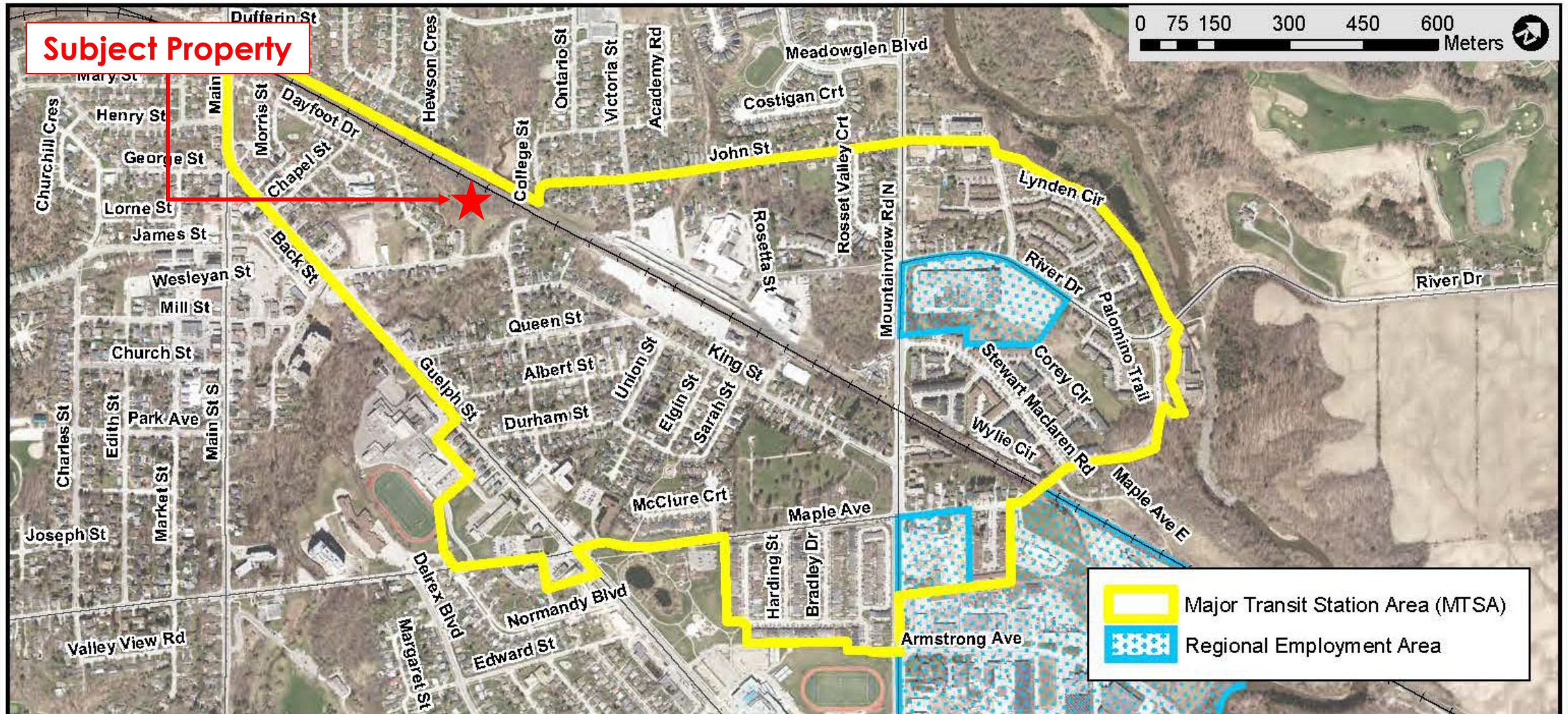
Site Context



- Official Plan Amendment to permit one additional storey (6), increased residential density, and a reduced setback to the rail corridor
- Zoning By-law Amendment to permit an apartment building and implement site specific development standards
- Future Applications:
 - Site Plan Control
 - Draft Plan of Condominium

Georgetown GO Station Area

Map 6g - Georgetown GO MTSA



Site Plan



Conceptual Rendering

Aerial View



Site Context	
Lot Area	Gross: 0.99 hectares (+/- 2.45 acres) Net: 0.987 hectares (+/- 2.43 acres)
Gross Floor Area	14,393.8 (+/- 154,933 sq. ft.)
Unit Count	163 residential units
Unit Mix 1 Bedroom/ 1 Bedroom Plus Den: 2 Bedroom/ 2 Bedroom Plus Den: 3 Bedroom:	65 (40%) 90 (55%) 8 (5%)
Density	1.46 FSI 165 UPH
Building Height	6-storeys (+/- 21.5 metres, not including MPH)
Parking Visitor Residential	40 (0.24 spaces/unit) 230 (1.65 spaces/unit)
Bicycle Parking	60 Spaces (0.37 spaces/unit)
Amenity Space Indoor Outdoor + Rooftop	239.1 sq. m. (1.47 sq. m./unit) 835.7 sq. m. (5.13 sq. m./unit)

Conceptual Rendering

Northern Site Access



Conceptual Rendering

Garden Terraces



Conceptual Rendering

Southern Site Access





Pottery Vessel Rim



Pottery Vessel Rim



Pottery Vessel Rim



Bone
Sewing
Needle



Projectile Point



Pipe
Mouthpiece
And Stem



Carved Effigy



Projectile Point



Thank you | Questions?

