

OPTION: A

IMPROVEMENTS TO NATURAL ICE RINK PROGRAM

Existing Natural Ice Program Improvements:

- Existing ice programs and facilities improved or expanded at selected community parks.
- Designate specific ice pads or specific times for leisure skating only (no shinny).
- Additional core amenities for existing and new ice surfaces (seating, mats, spectator seating).
- Consider enhanced amenities at key locations (i.e. warming stations, concessions, etc.)



1 Gellert Natural Ice Surface

- A new natural ice surface maintained and operated by Town Staff (Parks) to be located at Diamond #2.
- Designate specific times for shinny and leisure skating.



2 Glen Williams Natural Ice Surface

- Glen Williams Ice Surface would be maintained and operated by Town Staff (Parks). (Previously operated by Volunteers).
- Designate specific times for shinny and leisure skating.



3 Georgetown Fairgrounds Natural Ice Surface Expansion

- Provide two Town operated and maintained full-size natural rinks during the winter season. Prior to the COVID-19 Pandemic there was only one with a small additional pad.
- Designate 1 Leisure Rink, 1 Shinny Rink.



Considerations:

- Water service will be available at Gellert Community Park.
- Water service is required at Glen Williams Park in order to operate a Town maintained rink.
- Additional staff required to achieve the proposed level of service.
- New equipment for ease of maintenance and operations by staff.
- Program remains dependent on changing weather/climate conditions.
- May be considered as an interim solution until other new facilities can be implemented.

OPTION: A

IMPROVEMENTS TO NATURAL ICE RINK PROGRAM

Existing Natural Ice Program Improvements:

- Existing ice programs and facilities improved or expanded at selected community parks.
- Designate specific ice pads or specific times for leisure skating only (no shinny).
- Additional core amenities for existing and new ice surfaces (seating, mats, spectator seating).
- Consider enhanced amenities at key locations (i.e. warming stations, concessions, etc.)



4 Acton Sports Park Natural Ice Surface

- Provide a natural ice surface on the multi-purpose court, to be constructed and maintained by Town staff (Parks).
- *During the pandemic this rink was operated by Town Arena Staff but was not regularly operated prior to this due to limited resources.
- Designate specific times for shinny and leisure skating.



5 Prospect Park Natural Ice Surface Expansion

- Provide two Town operated and maintained full size natural ice rinks during the winter season. Prior to the COVID-19 pandemic only 1 was operated.
- Designate 1 Leisure Rink, 1 Shinny Rink



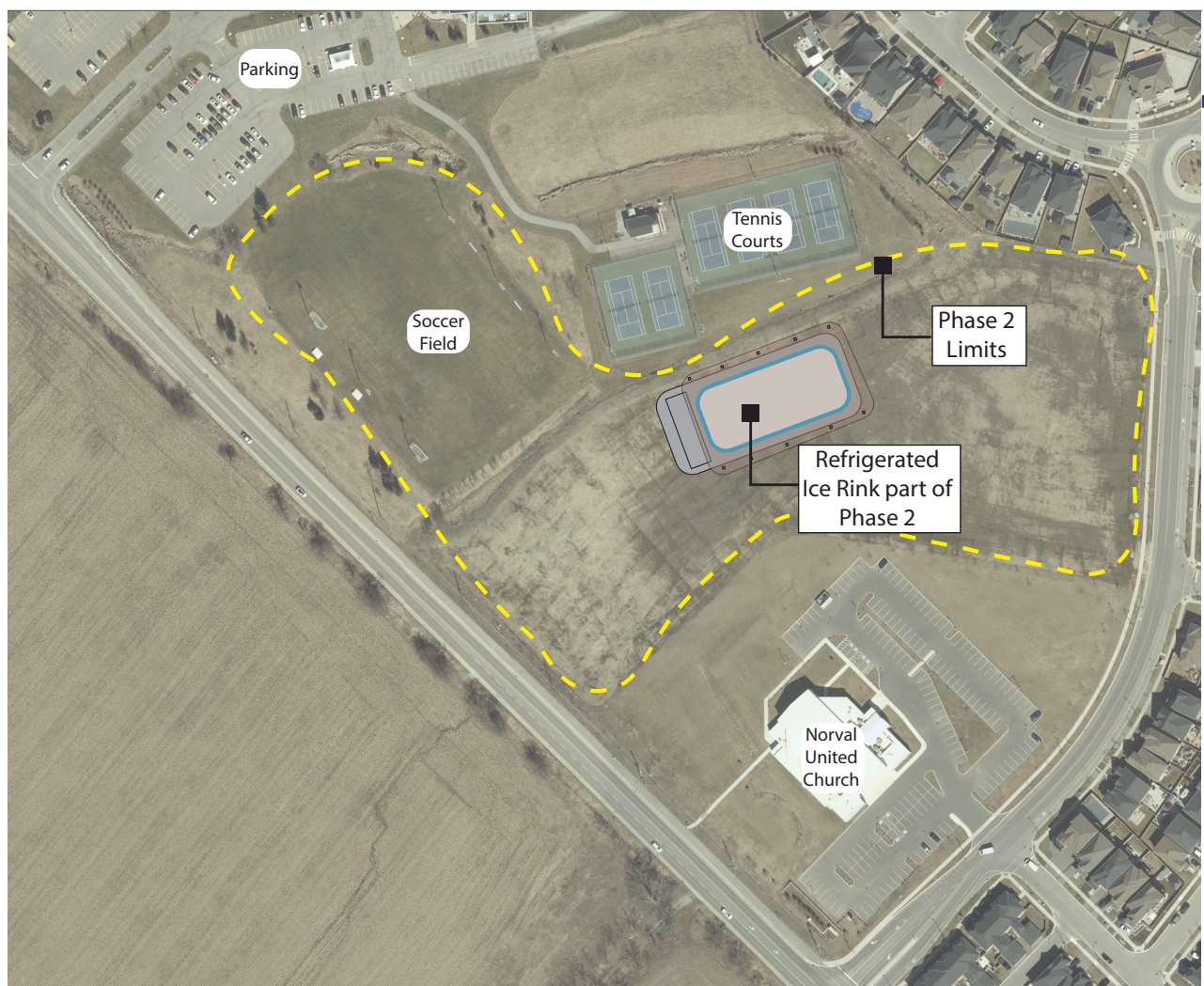
Considerations:

- Additional staff required to achieve the proposed level of service.
- New equipment for ease of maintenance and operations by staff.
- Water services exist at Prospect Park and Acton Sports Park.
- Program remain dependent on changing weather / climate conditions.
- May be considered as an interim solution until other new facilities can be implemented.

OPTION: B

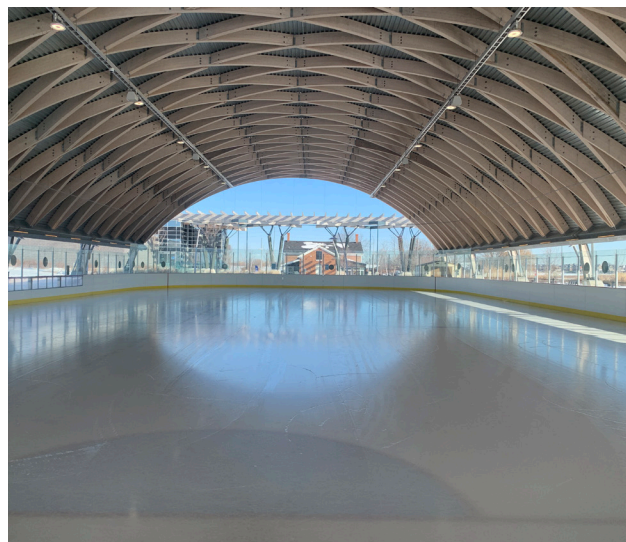
REFRIGERATED ICE PAD AT GELLERT PARK EXPANSION

- Proposed refrigerated ice rink to be included as part of the expansion of the park and community centre. Location of rink is to be determined through consultation process.
- Park elements include a multi-purpose court which could also be used as a refrigerated ice surface which will be more cost effective than a stand-alone refrigerated ice facility.
- Potential to cover the multi-purpose courts / ice surface with a roof for benefits related to ice production and longevity.



1 Gellert Park Expansion

- The expansion of Gellert Park could be an opportunity to add a refrigerated ice facility for outdoor recreational use coordinated with the overall park design and proposed features.
- Proposed facility would be lit for extended use.

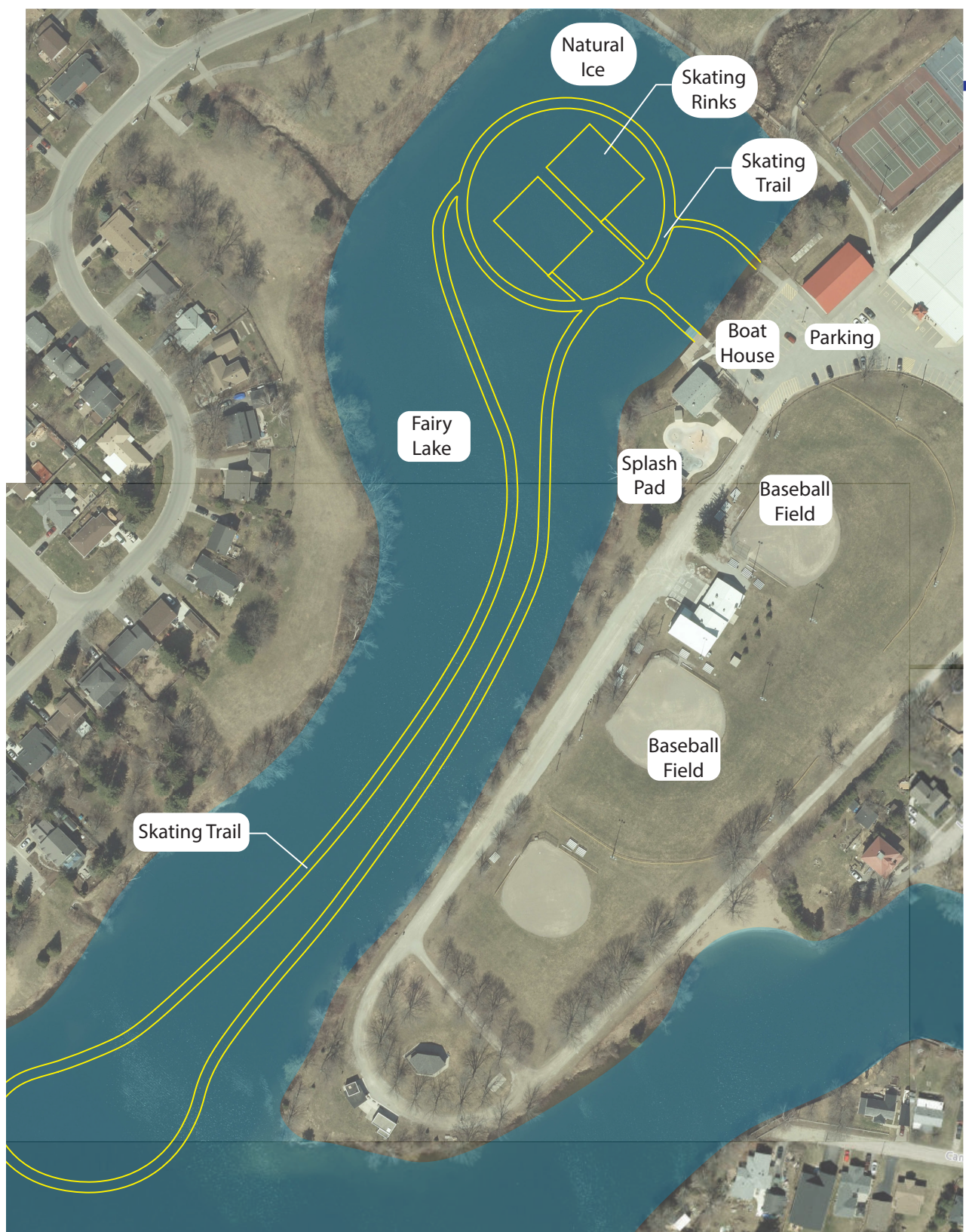


Considerations:

- Trained staff to maintain ice surface.
- Incorporation into overall park expansion design
- Specialized equipment in order to produce and maintain ice.
- Significant cost impact of refrigerated ice surface and roof structure over rink.
- Compatibility with other park expansion program.
- Requires scheduling, programming and monitoring to ensure leisure use available at key times.
- Less costly than a refrigerated trail due to the features planned for inclusion in the Gellert Park Expansion Program.

OPTION: C FAIRY LAKE ICE PROGRAM

- Proposed natural ice surface / facilities on Fairy Lake.



1 Fairy Lake Ice Program

- Fairy Lake Outdoor Ice Feasibility Review confirmed suitability for an outdoor ice program (subject to detailed planning)
- Town to monitor and post ice conditions
- Town staff or volunteers to construct/maintain ice facilities. (TBD)
- Snow cleared on select locations on the lake to create skating trail and skating rinks



Fairy Lake Ice Study:

- The climate in Acton would allow for a reasonable outdoor ice skating season at Fairy Lake.
- Fairy Lake characteristics are suitable for outdoor ice facilities.
- The construction of ice facilities would be able to start in early January (average) with light duty equipment and vehicles.
- The ice facilities would be able to operate until early March (average) depending on weather.
- For light duty operations equipment, there would be an outdoor skating season from 36-63 days with an average of 54 days.
- For heavy duty operations equipment, there would be an outdoor skating from 9-51 days with an average of 33 days.

Considerations:

- Staffing levels to meet requirements for ice monitoring.
- Staff training and policy implementations for safety.
- Appropriate weather and climate conditions.
- Implementation of a policy and safety procedures prior to ice use.
- Conditional on ice conditions, weather, and safety.
- Potential community involvement in maintaining rinks in “approved” areas.
- Potential site capacity if significant regional draw.

OPTION: D

SYNTHETIC ICE SURFACE FOR SPECIAL EVENTS

Synthetic Ice Rink

Town to acquire a synthetic ice surface which can be used for public events, set up in a park for the winter skating season, or used year round if appropriate.

- Partnership with Light Up the Hills to bring a temporary synthetic ice rink to Dominion Gardens.
- Timing of events (i.e Light up the Hills) may not be compatible with the timing of natural ice rink production. (November to February)
- Use of synthetic ice could be used at other events within the Town. (i.e BIA) or could operate throughout the year).



1 Dominion Gardens Synthetic Ice Rink

- Potential location of synthetic ice shown conceptually. (Approx. Size: 20m x 25m)

Considerations:

- Event organizers in partnership with the Town to run and operate the facility.
- Cost of delivery, install and storage.
- Purchase or Rental Options (Cost considerations).
- 4-5 metres per skater determines the surface size.
- Could be rented initially as a Pilot project.
- Location requires level ground.
- Option for lighting.
- May not provide core outdoor skating surface due to limitations of synthetic
- Could be used for “Pop-Up” events.

OPTION: E FORMALIZE VOLUNTEER ICE RINK PROGRAM

Volunteer Ice Program

- The outdoor ice volunteer program is unstructured and informal.
- It would be beneficial to formalize the program, including level of support by the Town, site selection criteria, basic training and operating guidelines for community volunteers.
- A more formal program would supplement the outdoor ice facilities provided at Town operated facilities.

1 Potential Volunteer Ice Surface Locations:

Meadowglen Park



Considerations:

- Establish a formal process and timeline for volunteers to apply for a new volunteer rink location.
- Provide defined levels of support (funding, materials, staff training/assistance).
- Identify when Town will undertake improvements to existing water services for ease of maintenance (i.e. at existing volunteer rink locations).
- Provision of lighting where possible to extend use at existing volunteer locations.

Bovis Park



Sir Donald Mann Park



West Branch Park



Maple Creek Park



Joseph Gibbons Park



Glen Williams Park

