

Outdoor Ice Strategy

Town of Halton Hills • Recreation & Parks



PROJECT BACKGROUND

PURPOSE OF STUDY

- The Town of Halton Hills is undertaking an Outdoor Ice Strategy to review the short and long term vision for outdoor ice facilities and programs provided by the Town. We need your input!

WHAT WILL THE STUDY REVIEW?

- Existing outdoor ice facilities, including potential improvements and operating improvements
- Volunteer ice rink program, including potential improvements
- Potential new facilities and/or programs
- Feasibility/costs analysis and business case for new facilities
- Potential for formal facilities/programs on Fairy Lake
- Impacts of Climate Change and Town Climate policies/goals on outdoor ice programs and facilities

OBJECTIVES

- To engage with local residents, community groups, and Council to define the Outdoor Ice Strategy.
- To find out what outdoor ice activities residents are interested in.
- To determine if more outdoor ice facilities/programs are needed
- To determine what type of outdoor ice experiences people want
- To identify if there are opportunities for multi-purpose, multi-season facilities.
- To find out how to improve existing outdoor rinks and volunteer rink programs.
- To see if outdoor ice facilities will continue to be viable with a changing climate, including meeting the Town's Climate Goals (Net Zero by 2030)
- To determine the cost of any new facilities or improvements (capital and operating) and confirm if there is a clear business case for them.
- To provide an implementation strategy for any recommendations.
- To confirm any risks associated with Outdoor Ice programs and facilities

WHAT IS NOT A PART OF THE STUDY?

- Skating on Stormwater Management (SWM) ponds is prohibited due to unsafe and changing conditions, and managed by the Transportation and Public Works Department. Stormwater Management (SWM) ponds are not included in this review.
- Indoor Ice Facilities are not being reviewed as part of this study.

DESIRED OUTCOME

- The project will deliver a clear Council Approved Outdoor Ice Strategy, including budget requirements for any new facilities, and a clear phased implementation strategy of all recommendations.

OUTDOOR ICE IN OTHER TOWN DOCUMENTS:

Recreation & Parks Strategic Plan:

- Highlighted a desire for year round activities in parks including winter activities and facilities
- No set service level for outdoor ice facilities (monitor supply/demand).

Parks Bylaw 2013-0062:

- Outdoor skating in parks prohibited except in designated locations
- Skating or use of Fairy Lake in winter is prohibited (ice conditions not monitored)

PROJECT TIMELINE



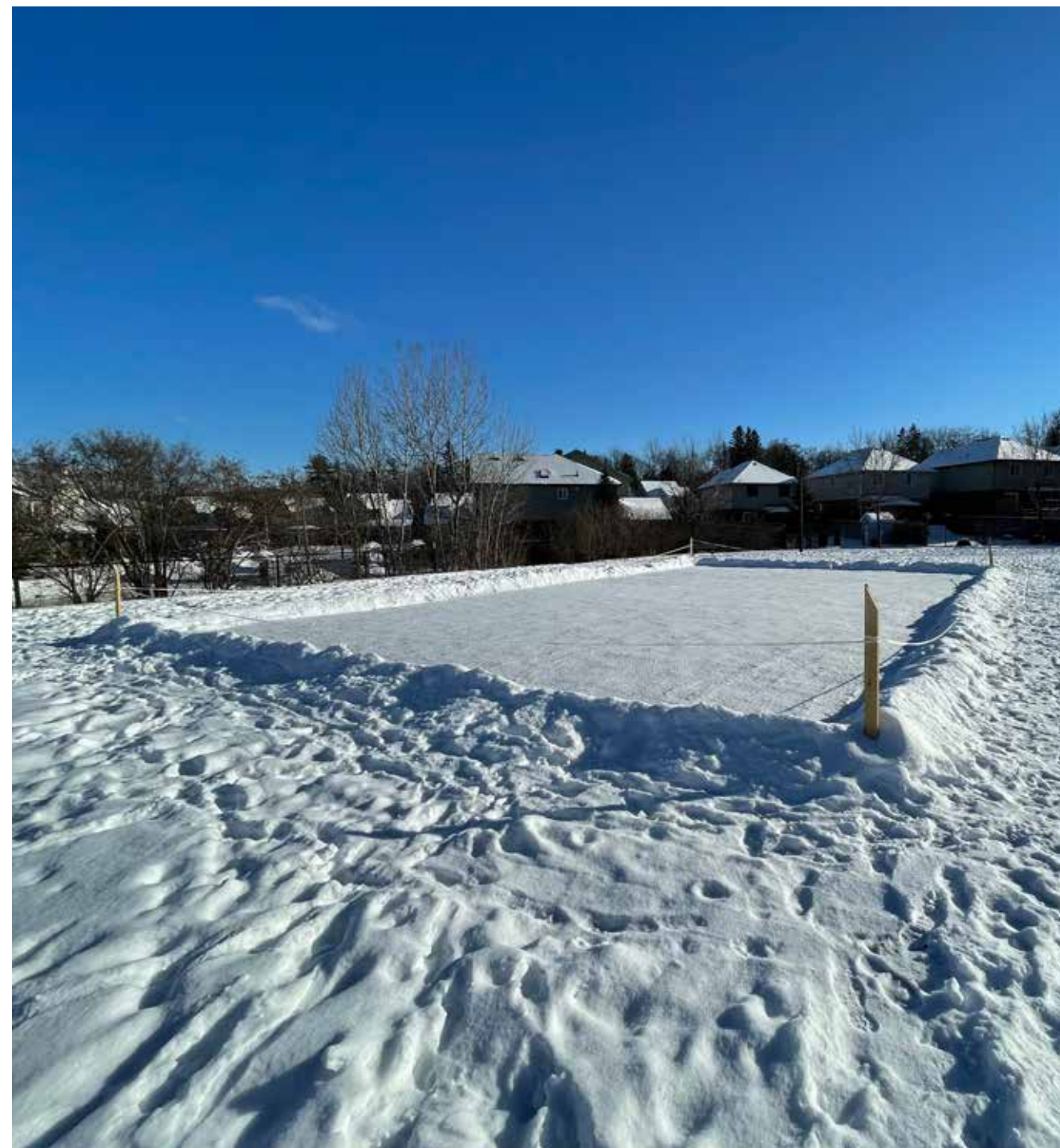
Outdoor Ice Strategy

Town of Halton Hills • Recreation & Parks



TYPES OF OUTDOOR ICE FACILITIES

**OUTDOOR NATURAL RINK
(MUNICIPAL/VOLUNTEER)**



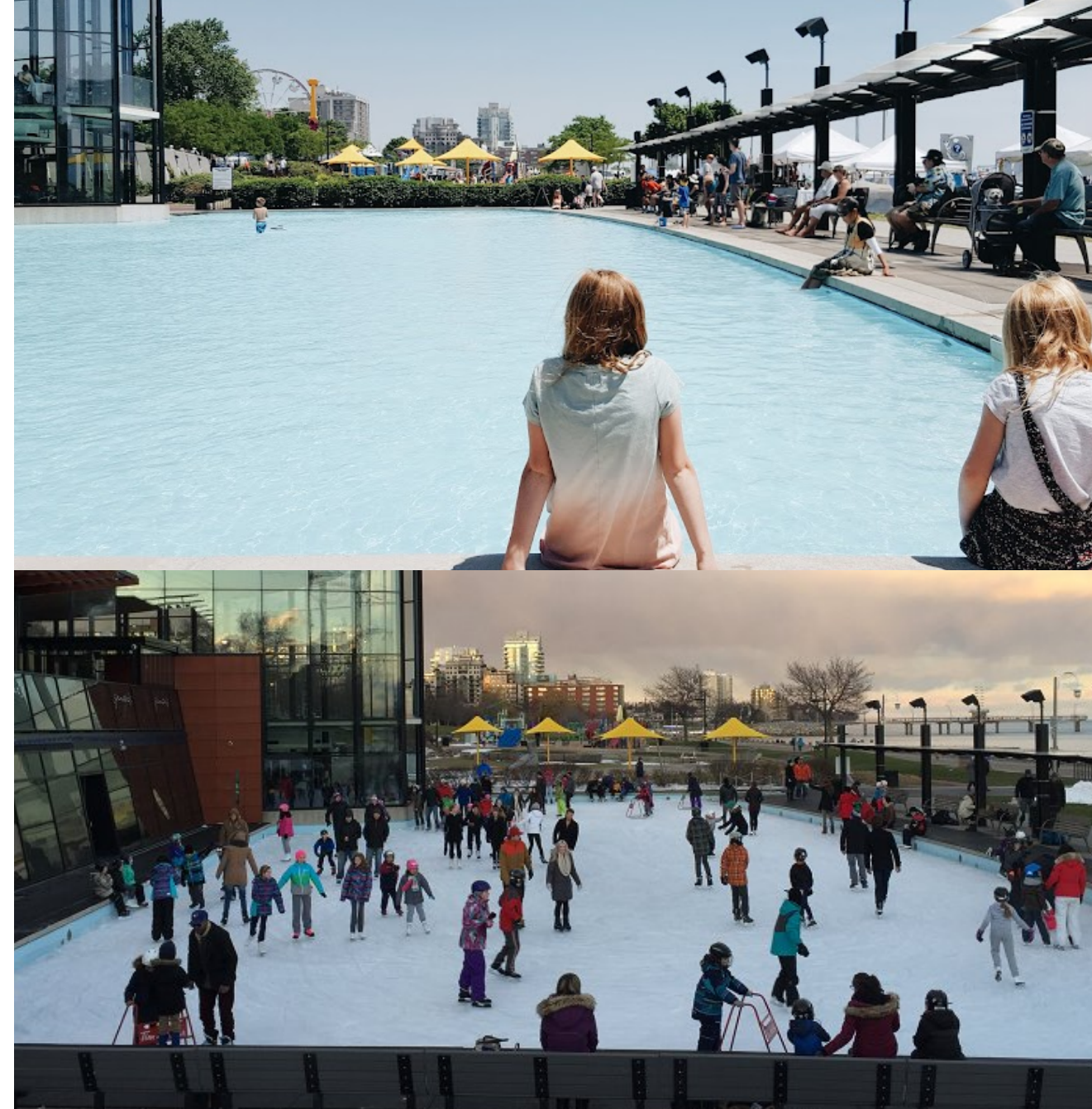
**REFRIGERATED OUTDOOR MULTI-USE
SPORT RINK**



REFRIGERATED OUTDOOR RINK



**MULTI-USE / SPLASH-PAD AND
REFRIGERATED RINK**



NATURAL BODIES OF WATER



**NOTE: SKATING ON STORM WATER PONDS IS
UNSAFE AND PROHIBITED IN THE TOWN
OUTDOOR REFRIGERATED RINK
(PLAZA STYLE)**



SEMI-ENCLOSED REFRIGERATED RINK



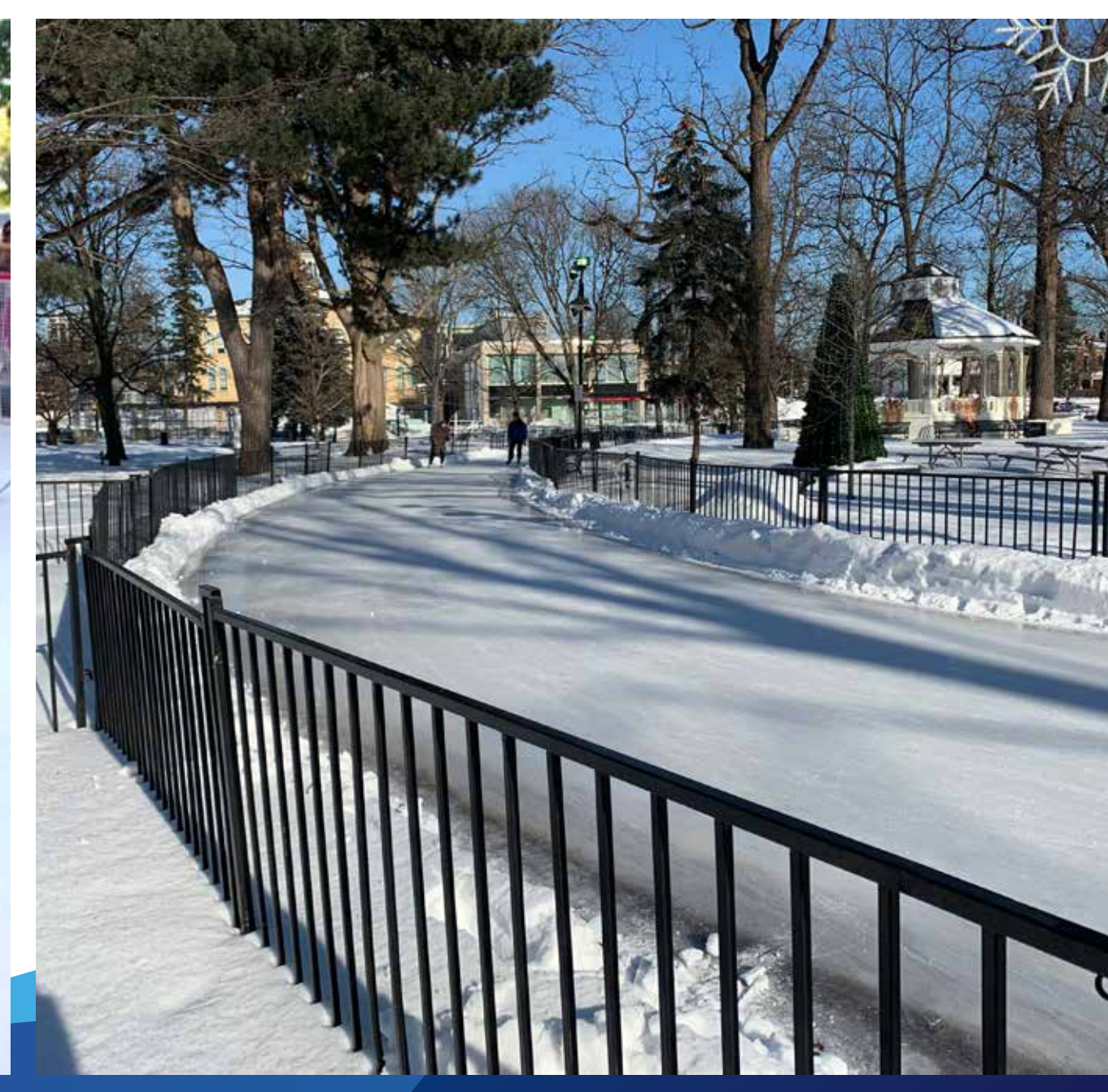
SYNTHETIC RINKS



NATURAL ICE SKATING TRAIL



REFRIGERATED ICE SKATING TRAIL



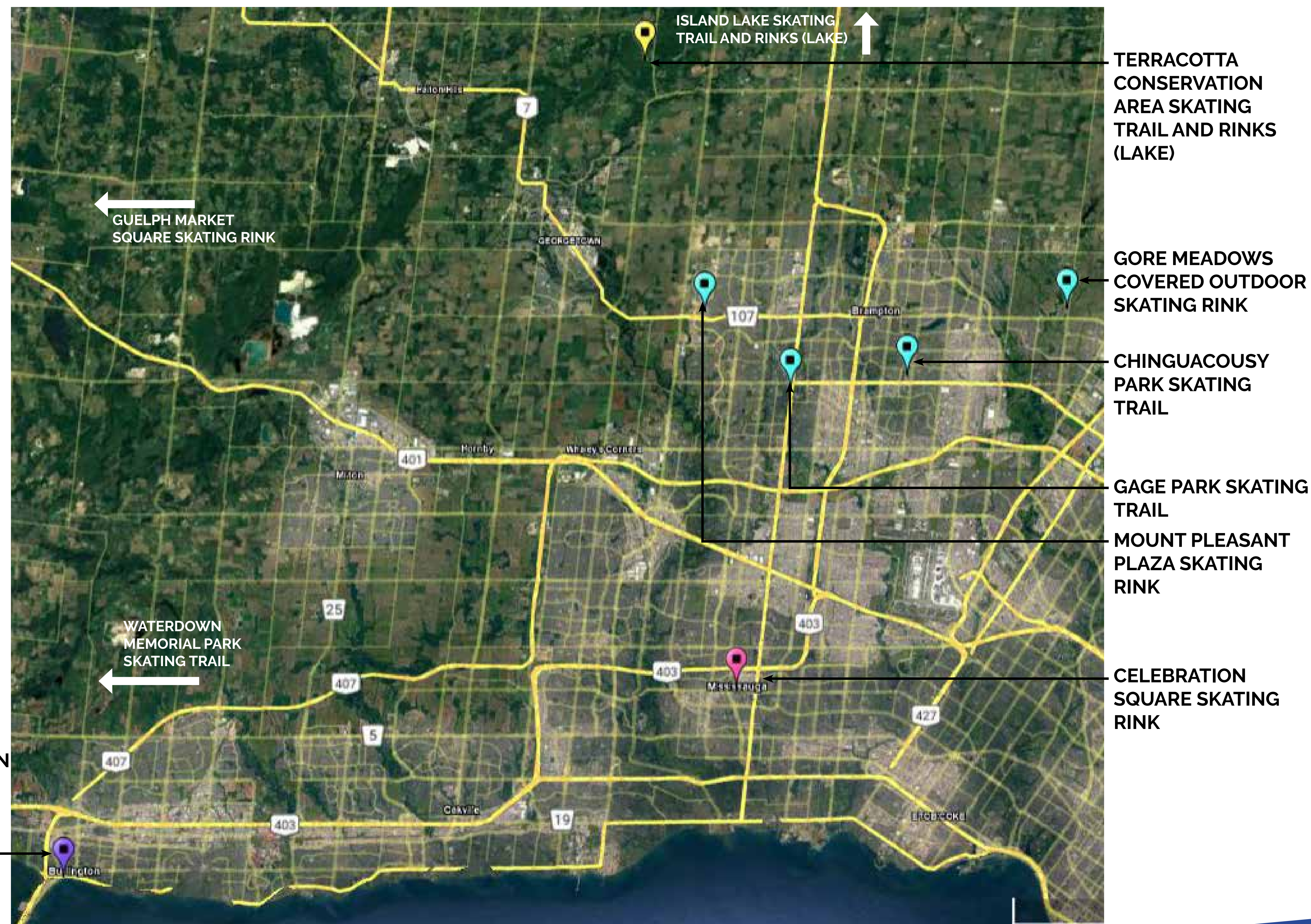
Outdoor Ice Strategy

Town of Halton Hills • Recreation & Parks

REGIONAL CONTEXT MAP

REGIONAL MAP OF MAJOR OUTDOOR ICE FACILITIES

NOTE:
OUTDOOR
ICE RINKS
OF NOTE
LOCATED
WITHIN
DRIVING
DISTANCE.



CHINGUACOUSY PARK SKATING TRAIL



TERRACOTTA CONSERVATION AREA SKATING TRAIL



GAGE PARK SKATING TRAIL

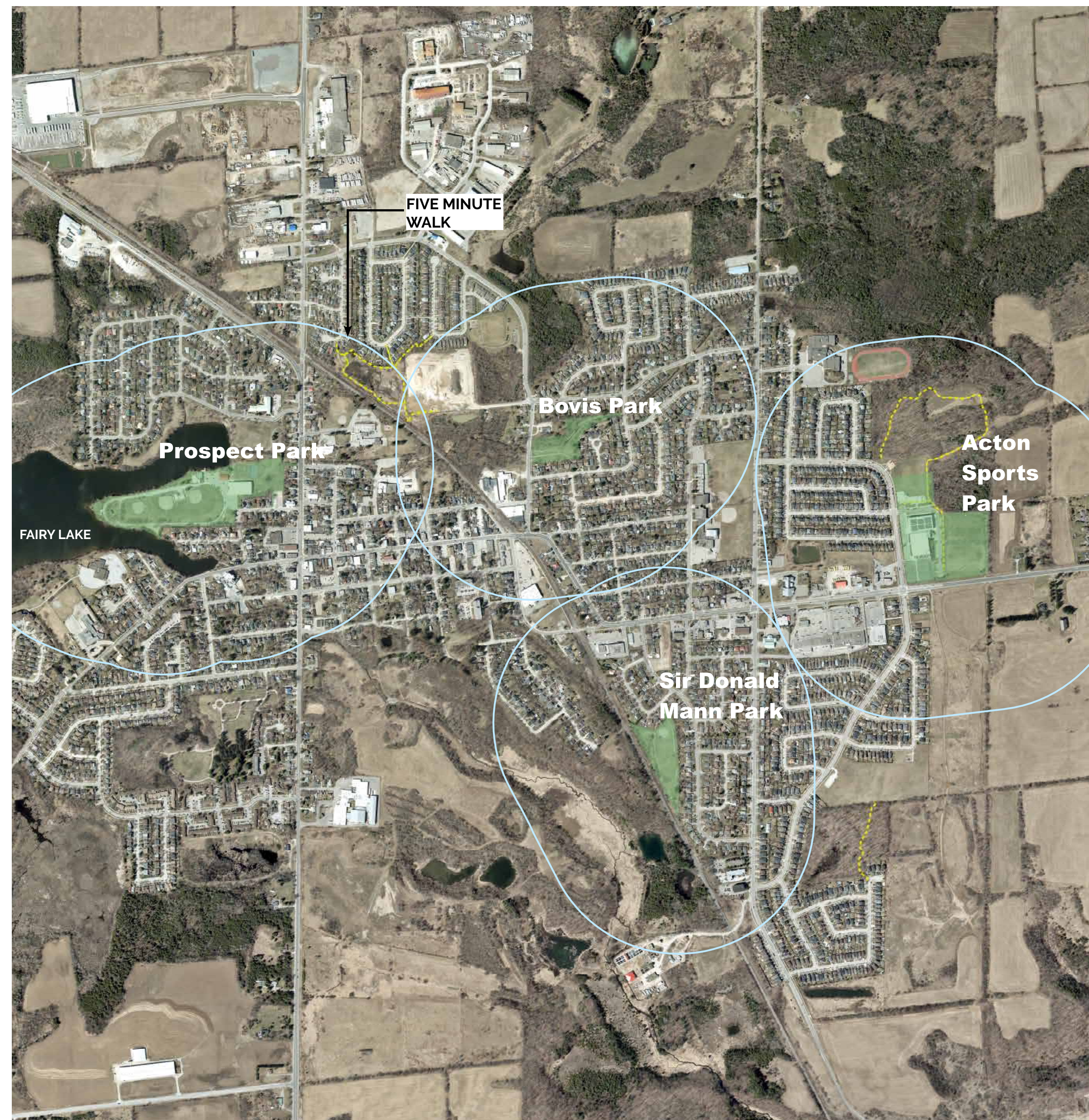


Outdoor Ice Strategy

Town of Halton Hills • Recreation & Parks

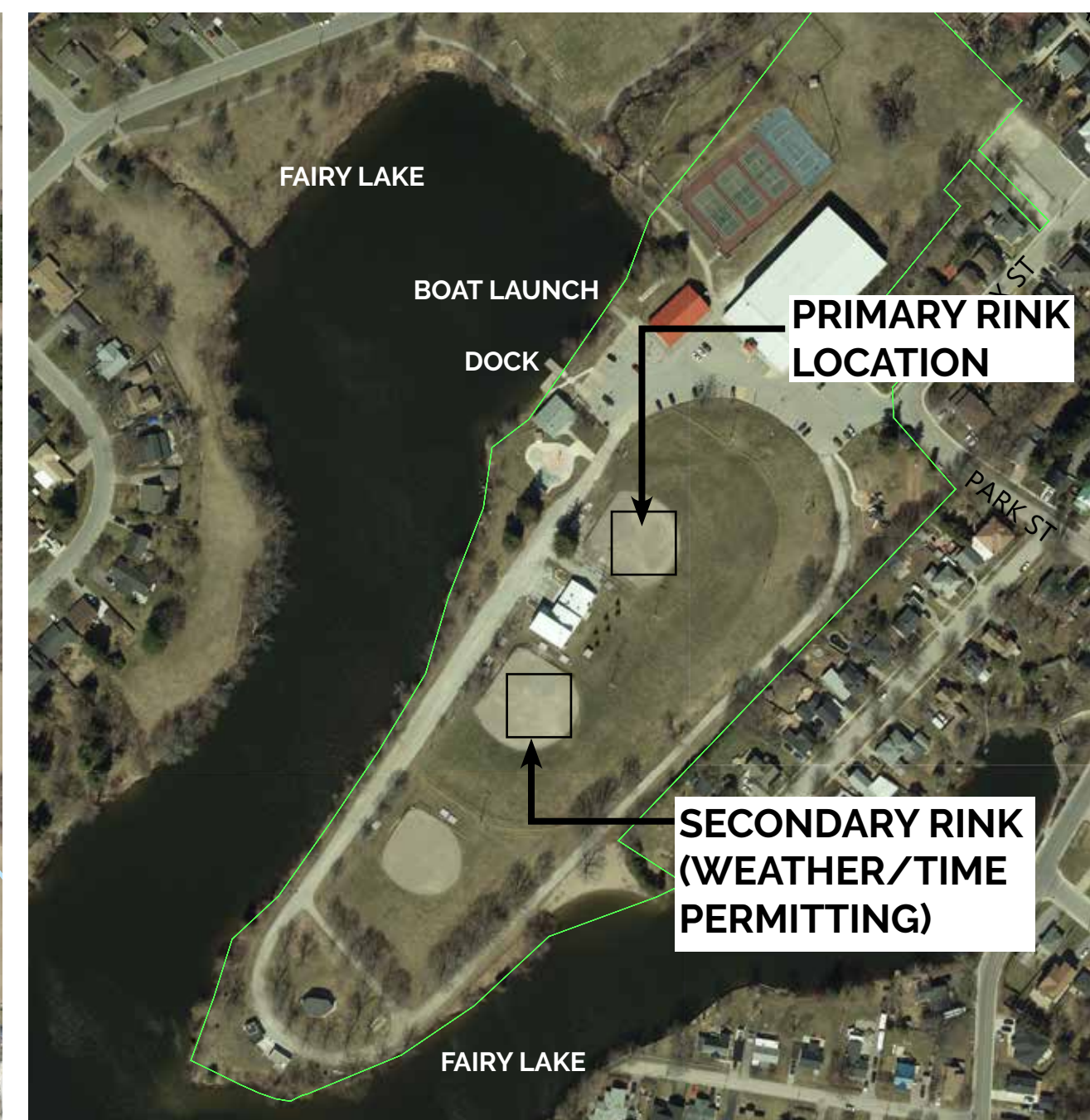
ACTON OUTDOOR ICE FACILITIES

ACTON - CONTEXT MAP



TOWN OPERATED RINKS

ACTON - PROSPECT PARK



RINKS:
- 2 FULL-SIZE SKATING RINKS

AMENITIES:
- LIGHTING
- SEATING

ACTON - SPORTS PARK



RINKS:
- 1 FULL-SIZE SKATING RINK

AMENITIES:
- LIGHTING
- WASHROOMS (ARENA)
- CONCESSIONS (ARENA)

Outdoor Ice Strategy

Town of Halton Hills • Recreation & Parks



HALTON HILLS

FEBRUARY 2022

GEORGETOWN OUTDOOR ICE FACILITIES

GEORGETOWN - CONTEXT MAP



TOWN OPERATED RINKS

GEORGETOWN FAIRGROUNDS



RINKS:
- 2 FULL-SIZE SKATING RINKS
- 1 SKATING PAD

AMENITIES:
- LIGHTING
- SEATING / PICNIC TABLES

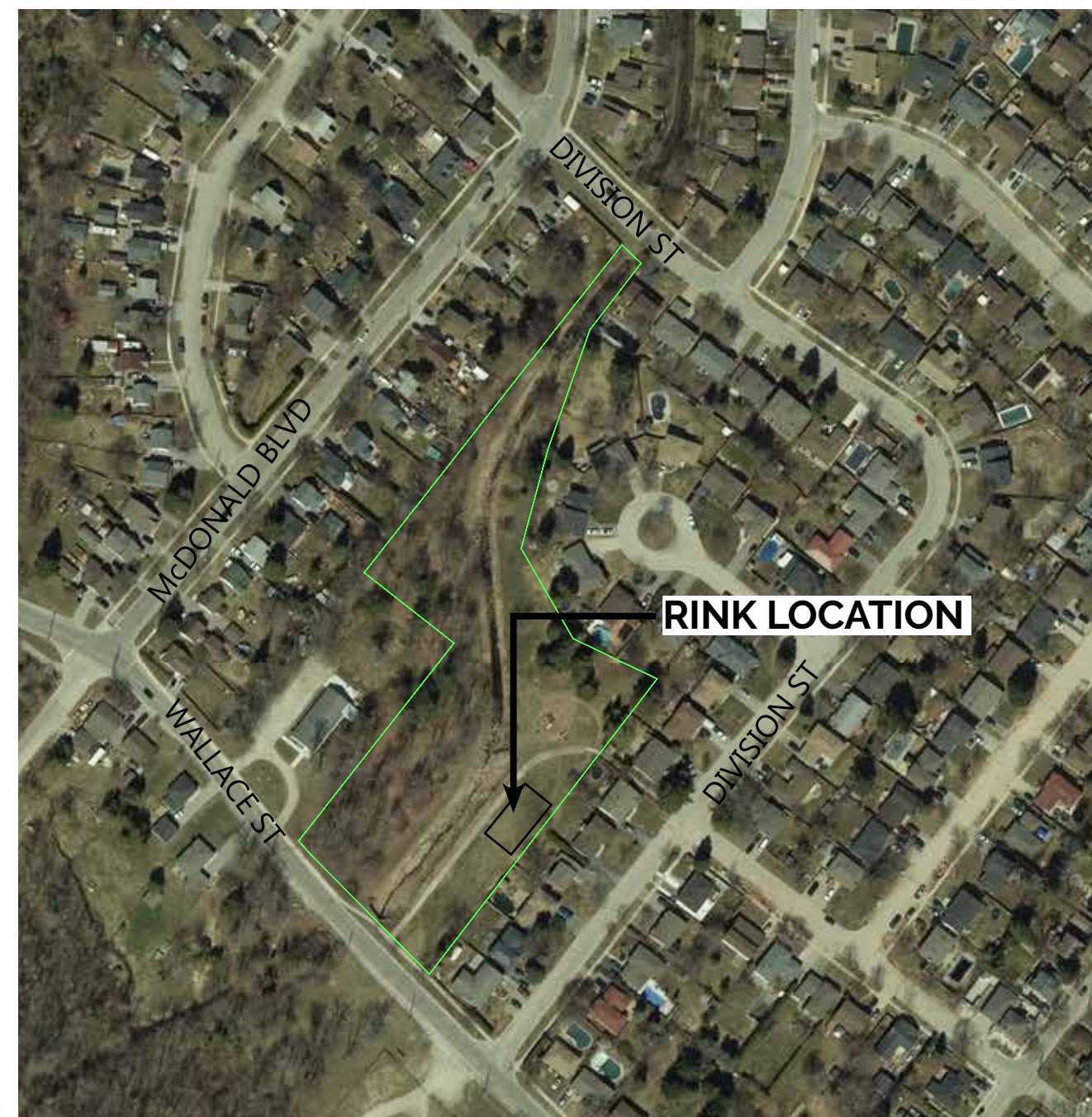
Outdoor Ice Strategy

Town of Halton Hills • Recreation & Parks

COMMUNITY VOLUNTEER RINKS

ACTON

ACTON - BOVIS PARK



ACTON - SIR DONALD MANN PARK



Volunteer Rinks Process:

The Town supports volunteers to construct natural ice rinks in parks.

The Town provides hoses, a picnic table, trash receptacle and signage for volunteers who construct and maintain the rink. In some locations, the Town provides a water source.

The Town also provides assistance time permitting for some tasks (i.e. clearing after a major snow).

There is no formal program in place and volunteer rinks are managed on a case-by-case basis.



Outdoor Ice Strategy

Town of Halton Hills • Recreation & Parks



COMMUNITY VOLUNTEER RINKS

GEORGETOWN

GEORGETOWN - MAPLECREEK PARK



GEORGETOWN - JOSEPH GIBBONS



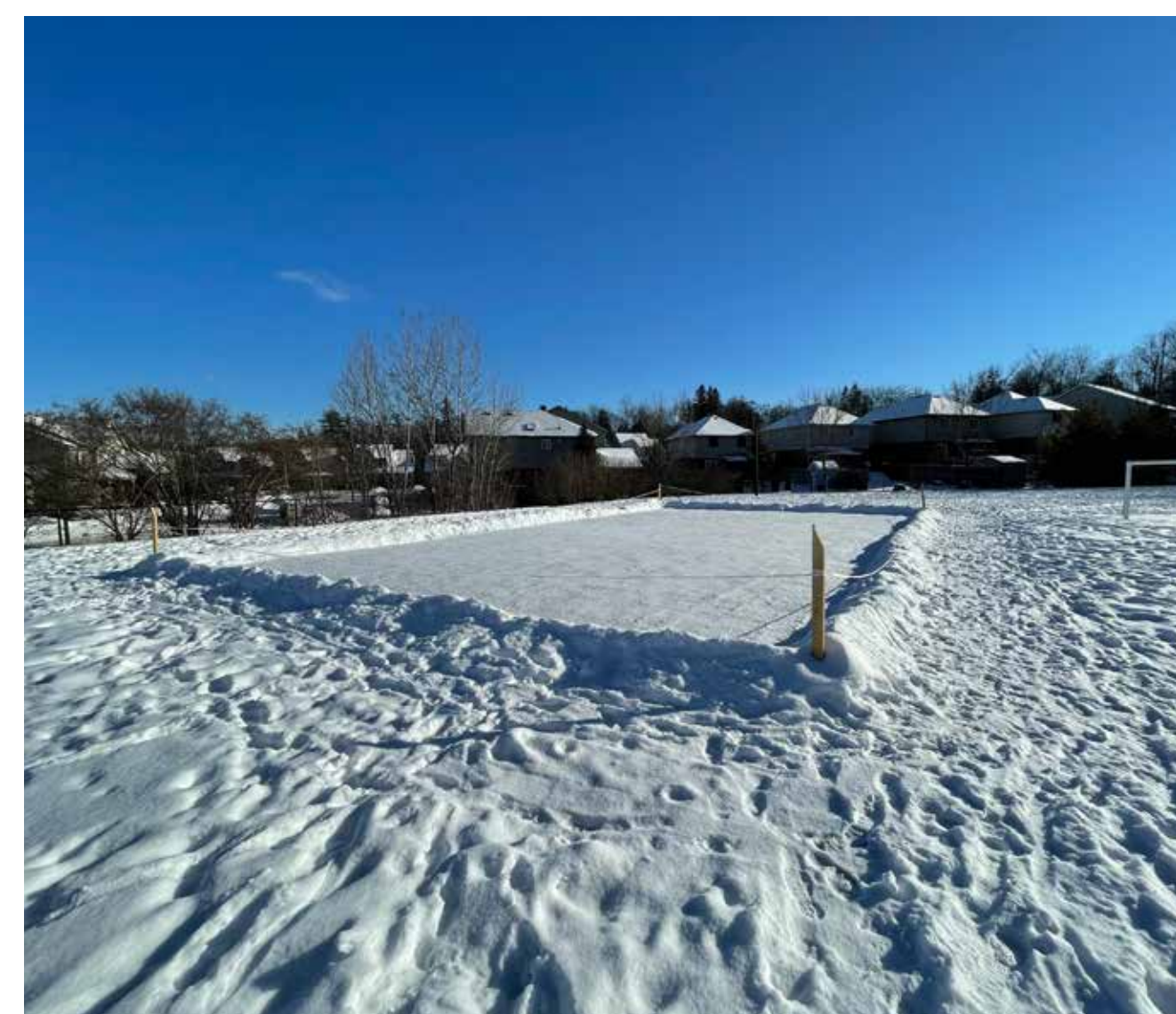
GEORGETOWN - MEADOWGLEN



GLEN WILLIAMS PARK



GEORGETOWN - WESTBRANCH



*Some volunteer locations do not have Town water supplies available and water is provided by adjacent properties: Glen Williams Park (Glen Williams), Bovis Park (Acton), Westbranch Drive (Georgetown) and Meadowglen Park (Georgetown).

Outdoor Ice Strategy

Town of Halton Hills • Recreation & Parks

POTENTIAL AMENITIES

RESTROOMS / CHANGE ROOMS



WARMING AREA



MUSIC / SPEAKERS



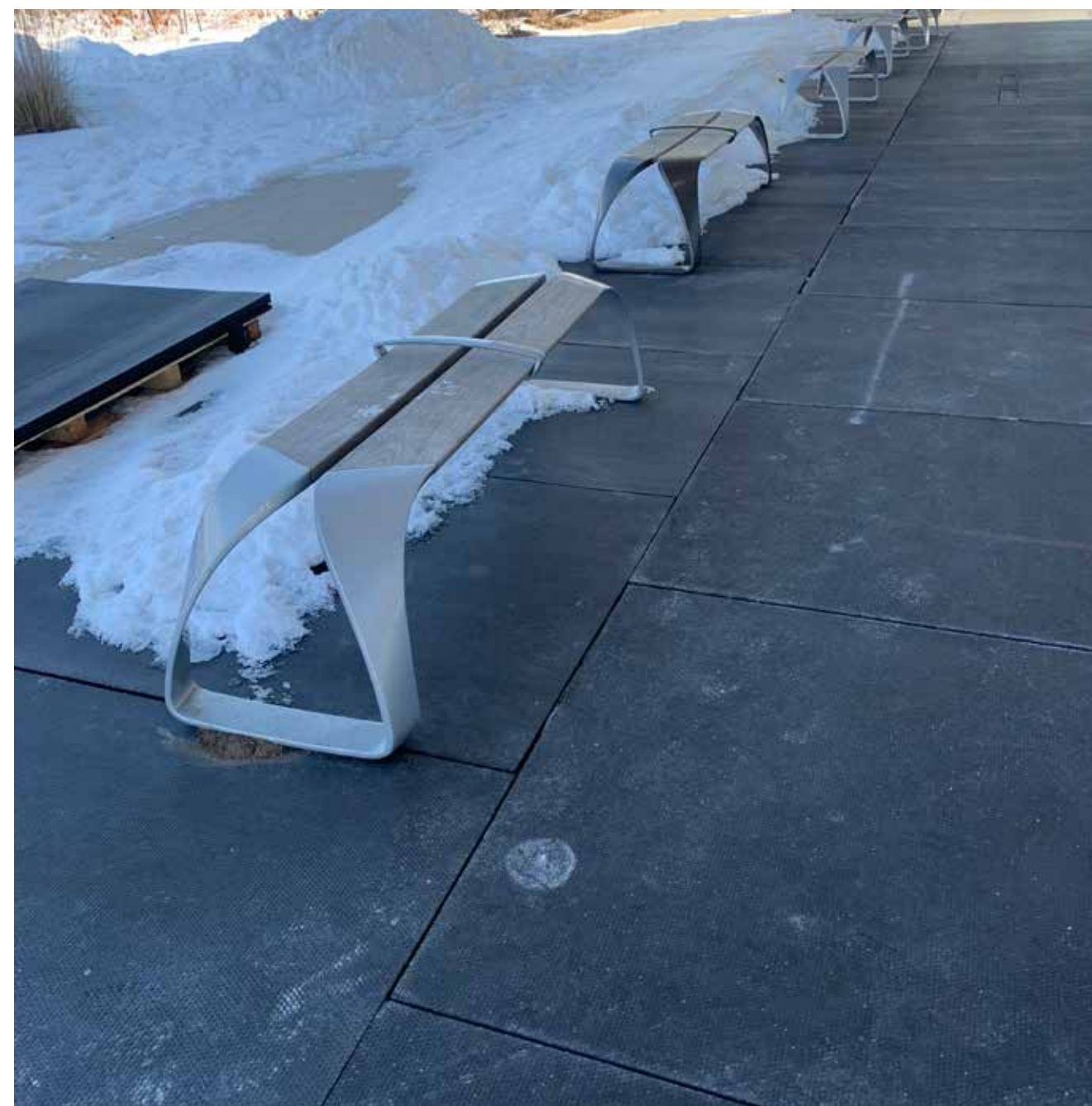
SKATE RENTALS



LOCKERS



SEATING



CONCESSIONS



OUTDOOR LIGHTING

