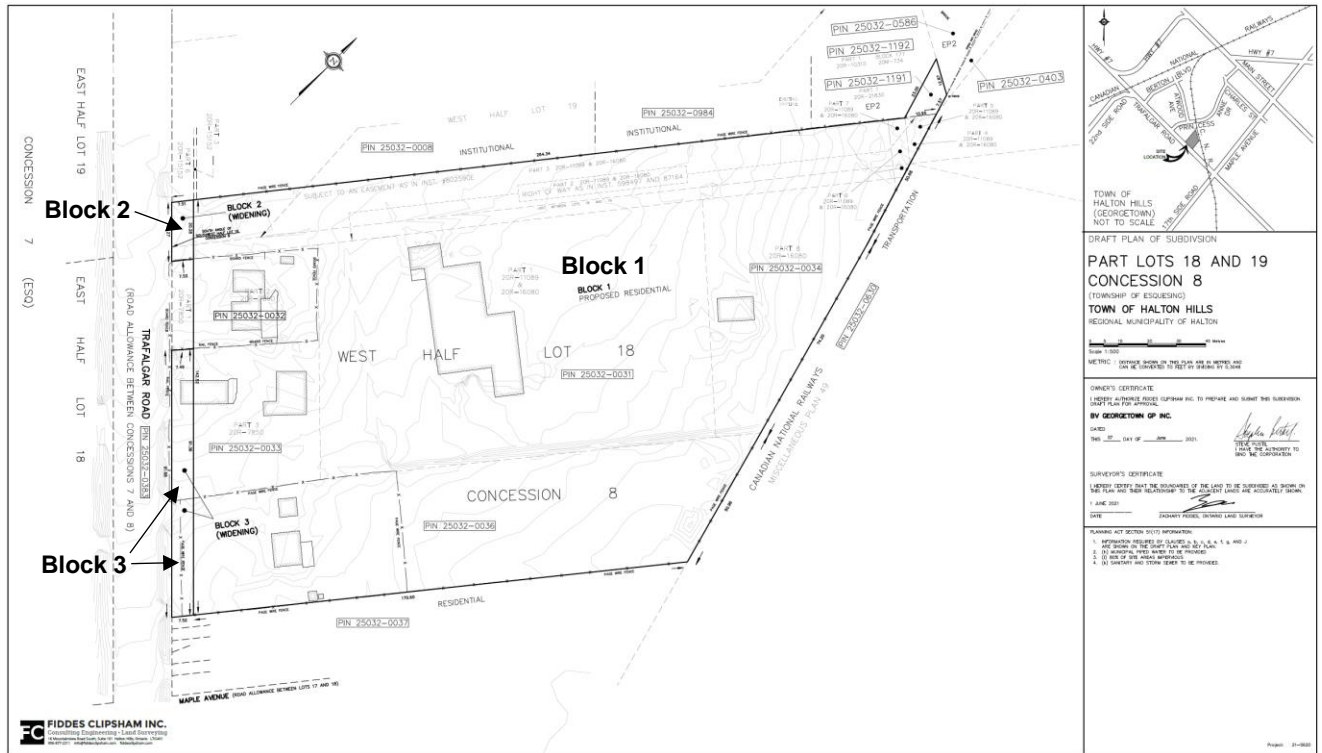


SCHEDULE 3 – DRAFT PLAN OF SUBDIVISION



TOWN OF HALTON HILLS (GEORGETOWN)
NOT TO SCALE

DRAFT PLAN OF SUBDIVISION

**PART LOTS 18 AND 19
CONCESSION 8**
(TOWNSHIP OF GEORGETOWN)
TOWN OF HALTON HILLS
REGIONAL MUNICIPALITY OF HALTON

Scale 1:500

METHOD: DISTANCE MEASURED ON THE DRAWING AND MEASURED ON THE GROUND TO VERIFY ACCURACY BY 15.00M

OWNER'S CERTIFICATE
I HEREBY AUTHORIZE FIDDES CLIPSHAM INC. TO PREPARE AND SUBMIT THIS SUBDIVISION DRAFT PLAN OF SUBDIVISION.

BY **GEORGETOWN GP INC.**
DATED: _____
THIS _____ DAY OF _____ 2011.

SURVEYOR'S CERTIFICATE
I HEREBY CERTIFY THAT THE BOUNDARIES OF THE LAND TO BE SUBDIVIDED AS SHOWN ON THIS PLAN AND THEIR RELATIONSHIP TO THE ADJACENT LOTS ARE ACCURATELY SHOWN.

1 AUG 2011
DATE: _____
FIDDES CLIPSHAM INC. (PROFESSIONAL ENGINEER)

PLANNING ACT SECTION 3(1) INFORMATION:
1. APPROVED PRELIMINARY PLAN BY: P.E. 1, 2, 3, 4, 5, 6, 7, 8, 9, 10, 11, 12, 13, 14, 15, 16, 17, 18, 19, 20, 21, 22, 23, 24, 25, 26, 27, 28, 29, 30, 31, 32, 33, 34, 35, 36, 37, 38, 39, 40, 41, 42, 43, 44, 45, 46, 47, 48, 49, 50, 51, 52, 53, 54, 55, 56, 57, 58, 59, 60, 61, 62, 63, 64, 65, 66, 67, 68, 69, 70, 71, 72, 73, 74, 75, 76, 77, 78, 79, 80, 81, 82, 83, 84, 85, 86, 87, 88, 89, 90, 91, 92, 93, 94, 95, 96, 97, 98, 99, 100.