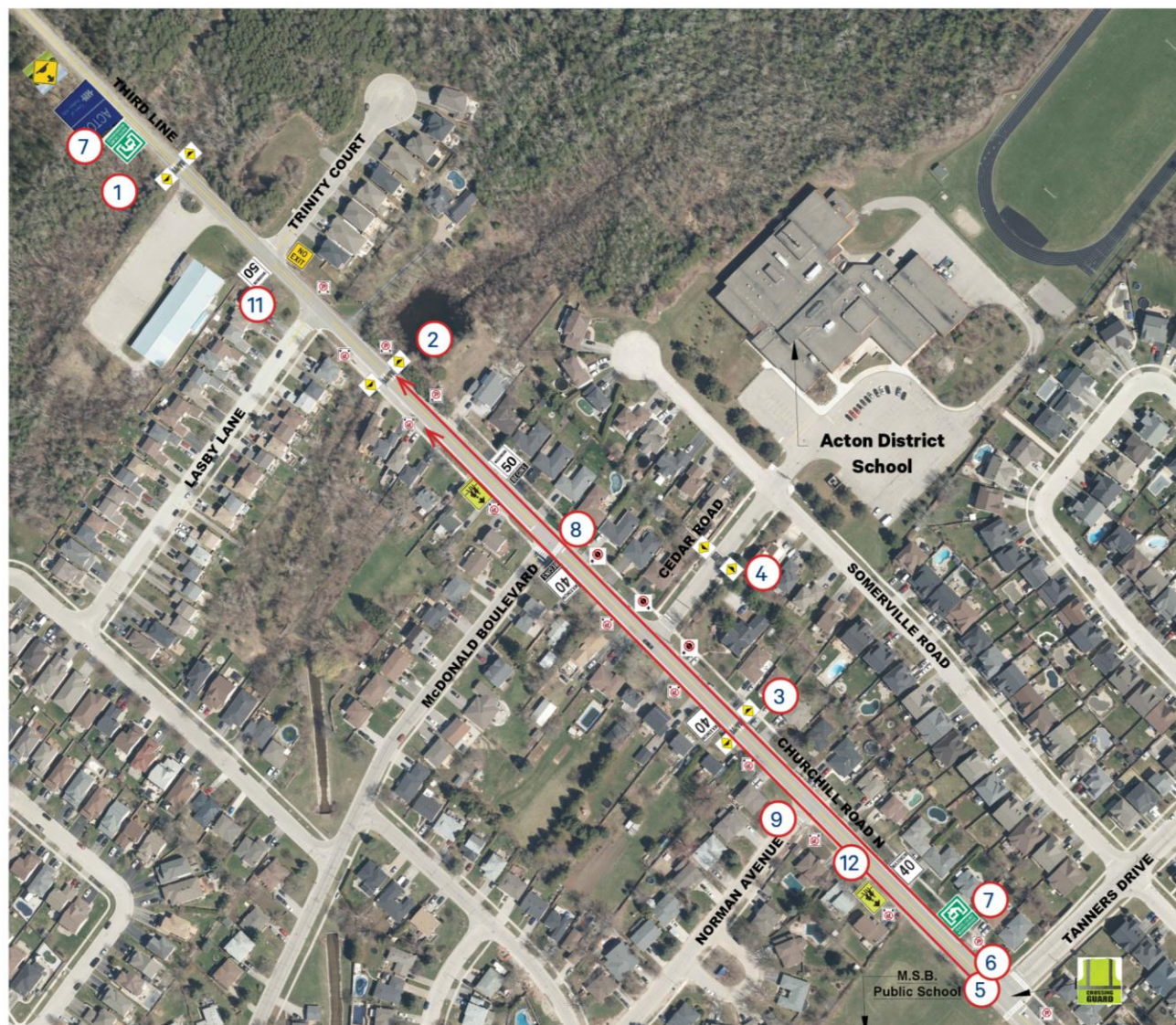


Churchill Road North Neighbourhood Traffic Calming



Legend:

1. Collector Speed Hump on Third Line immediately north of Acton Curling Club driveway with "Speed Hump Ahead" and "Speed Hump" signs
2. Collector Road Speed Hump 105 m north of McDonald Blvd with "Speed Hump" signs
3. Collector Road Speed Humps 185 m north of Tanners Drive with "Speed Hump" signs
4. Local Road Speed Hump on Cedar Rd. with "Speed Hump" signs
5. Painted White Edge Line on the east side, from Tanners Dr. to a point 45 m south of Lasby Ln.
 - Creating a 2.4 m wide Parking Lane accompanied by corner restrictions
 - Reduces Northbound Lane to 3.3 m
6. Painted White Edge Line on the west side, from Tanners Dr. to a point 45 m south of Lasby Ln.
 - 0.1 m from the edge of pavement
 - Southbound Lane width reduced to 4.0 m
7. Installing "Traffic Calmed Neighbourhood" signs on both ends of the study area
8. Converting to Ladder Crosswalk at McDonald Blvd two (2) crosswalks
9. 15 m Yellow Tail on Norman Ave.
10. Refreshing all other existing pavement markings
11. Installing an OVERSIZED "50 km/h BEGINS" sign on Third Ln. in the southbound direction
12. Installation of flexible bollards approx. 30 m south of Norman Avenue, on the centre line and edge lines

